



THE RITZ-CARLTON
YACHT COLLECTION

EVIRIMA

DECK PLANS AND SUITE DIAGRAM





EVIRIMA

OUR FLAGSHIP YACHT

With up to 298 guests aboard *Evrima*, taking in the view from your suite’s private terrace as you drop anchor off a scenic shoreline. From the aft Marina, you can explore by kayak or paddle board before heading ashore. Five restaurants and six lounges offer an array of culinary delights, while legendary service and luxurious amenities complete the onboard experience.

SUITE CATEGORIES

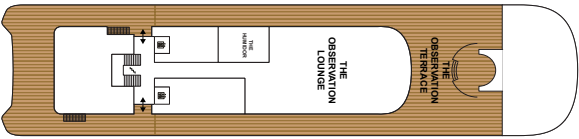
- THE OWNER’S SUITES
- THE VIEW SUITES
- THE LOFT SUITES
- THE GRAND SUITES
- THE SIGNATURE MID SUITES
- THE SIGNATURE SUITES
- THE TERRACE MID SUITES
- THE TERRACE SUITES
- ACCESSIBLE SUITES
- CONNECTING SUITES
- CONVERTIBLE SUITES*

SPECIFICATIONS

- GUEST CAPACITY
- OFFICER AND CREW
- TOTAL SUITES
- TONNAGE
- LENGTH
- WIDTH
- GUEST DECKS
- BUILT
- YACHT’S REGISTRY

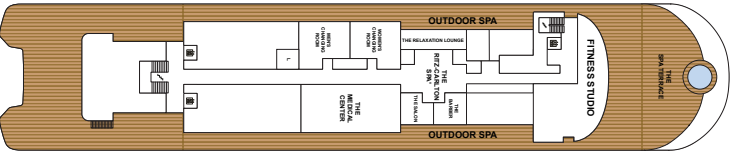
**Select Terrace Suites have the ability to convert into an expanded living and dining area or remain a second bedroom when connected to the adjacent suite.

DECK 10



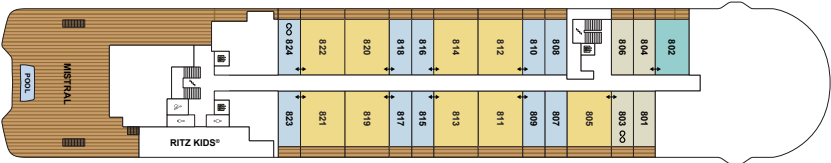
- THE OBSERVATION LOUNGE
- THE OBSERVATION TERRACE
- THE HUMIDOR

DECK 9



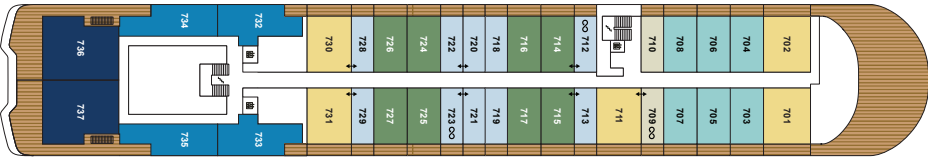
- THE GYM
- FITNESS STUDIO
- THE RITZ-CARLTON SPA®
- THE SPA TERRACE
- THE BARBER / THE SALON
- LAUNDERETTE
- THE MEDICAL CENTER

DECK 8



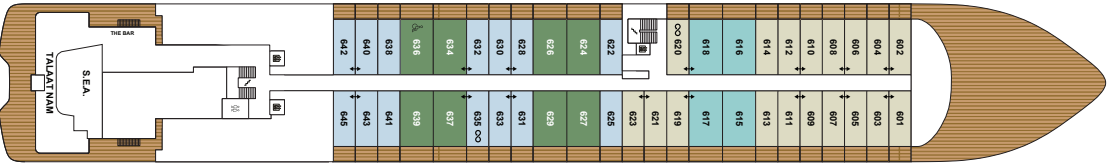
- DECK 8
- MISTRAL
- RITZ KIDS®
- SUITES 801 – 824

DECK 7



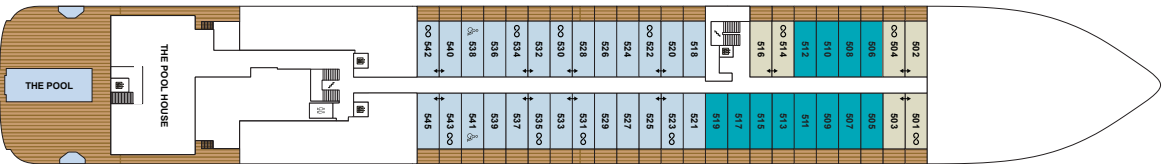
- DECK 7
- SUITES 701 – 737

DECK 6



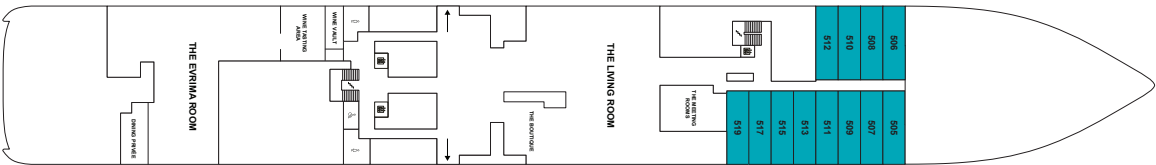
- DECK 6
- THE BAR
- S.E.A.
- TALAAT NAM
- SUITES 601 – 645

DECK 5



- DECK 5
- THE POOL HOUSE
- THE POOL
- SUITES 501 – 545

DECK 4



- DECK 4
- THE MEETING ROOMS
- THE LIVING ROOM
- THE BOUTIQUE
- THE EVRIMA ROOM
- DINING PRIVÉE
- WINE VAULT
- WINE TASTING AREA
- SUITES 505 – 519 LOWER LEVEL

DECK 3



- DECK 3
- THE MARINA TERRACE
- THE MARINA



EVRIMA

SUITES

Wake up every morning relaxed and carefree, from one of our 149 expertly appointed suites. Gaze out over the ocean from your private terrace. Designed to combine the modern elegance of The Ritz-Carlton with the casual luxury of the world’s most magnificent super yachts, our suites set a new standard for luxury travel. Furnished with luxurious, state of the art amenities, feel at ease in your private oasis at sea — your suite’s Personal Concierge is standing by to arrange your day.

SUITE AMENITIES AND FEATURES

- Access to a Personal Concierge in all suite categories
- Private oceanview terrace
- Luxury custom king bed sleep system
- Custom luxury bed and bath linens
- Double vanity bathrooms
- Luxury bath amenities
- 24-hour in-suite dining
- Espresso machine with complimentary coffee and teas
- Mini-bar provisioned to your preferences
- Complimentary chilled bottle of champagne upon arrival
- Complimentary Wi-Fi

THE OWNER'S SUITES

SUITE SIZE: 1098 SQ FT / 101 SQ M

TERRACE SIZE: 635 SQ FT / 59 SQ M

NUMBER OF SUITES: 2

DECKS: 7

TO VIEW VIDEO, CLICK HERE 

AMENITIES

- Large private terrace with private whirlpool
- Modern living and dining area
- Convertible sleep sofa
- Double vanity bathroom with modern soaking tub and separate shower
- Second bathroom with modern shower system
- Walk-in wardrobe
- Digital flat screen televisions
- Double vanity mirror and hair dryer



THE VIEW SUITES

SUITE SIZE: UP TO 574 SQ FT / 53 SQ M
TERRACE SIZE: UP TO 129 SQ FT / 12 SQ M
NUMBER OF SUITES: 4
DECKS: 7

TO VIEW VIDEO, [CLICK HERE](#) 



AMENITIES

- Modern living and dining area
- Dramatic floor-to-ceiling windows
- Convertible sleep sofa
- Double vanity bathroom with modern soaking tub and separate shower
- Digital flat screen televisions
- Double vanity mirror and hair dryer



THE LOFT SUITES

INNOVATIVE TWO-STORY SUITE
WITH ENTRY FROM BOTH LEVELS

SUITE SIZE: 611 SQ FT / 57 SQ M

TERRACE SIZE: 81 SQ FT / 7.5 SQ M

NUMBER OF SUITES: 12

DECKS: 4 / 5

TO VIEW VIDEO, CLICK HERE 

AMENITIES

Lower Level:

- Picture window
- Double vanity master bathroom with modern soaking tub and separate shower
- Digital flat screen television
- Double vanity mirror and hair dryer

Upper Level:

- Modern living and dining area
- Convertible sleep sofa
- Powder room
- Digital flat screen television



UPPER LEVEL



LOWER LEVEL

THE GRAND SUITES

SUITE SIZE: 587 SQ FT / 55 SQ M

TERRACE SIZE: UP TO 118 SQ FT / 11 SQ M

NUMBER OF SUITES: 14

DECKS: 7 / 8

TO VIEW VIDEO, CLICK HERE 



AMENITIES

- Modern living and dining area
- Double vanity bathroom with modern soaking tub and separate shower
- Dual walk-in wardrobes
- Convertible sleep sofa
- Digital flat screen televisions
- Double vanity mirror and hair dryer



THE SIGNATURE SUITES

SUITE SIZE: 429 SQ FT / 40 SQ M

TERRACE SIZE: UP TO 118 SQ FT / 11 SQ M

NUMBER OF SUITES: 27

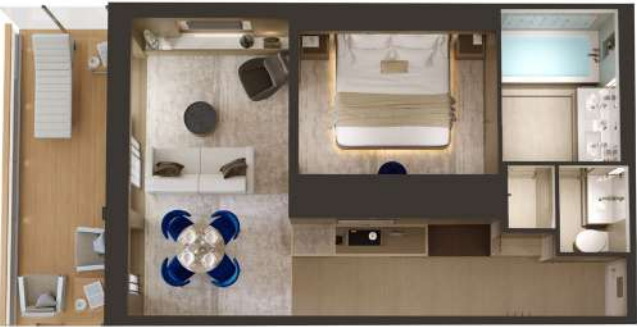
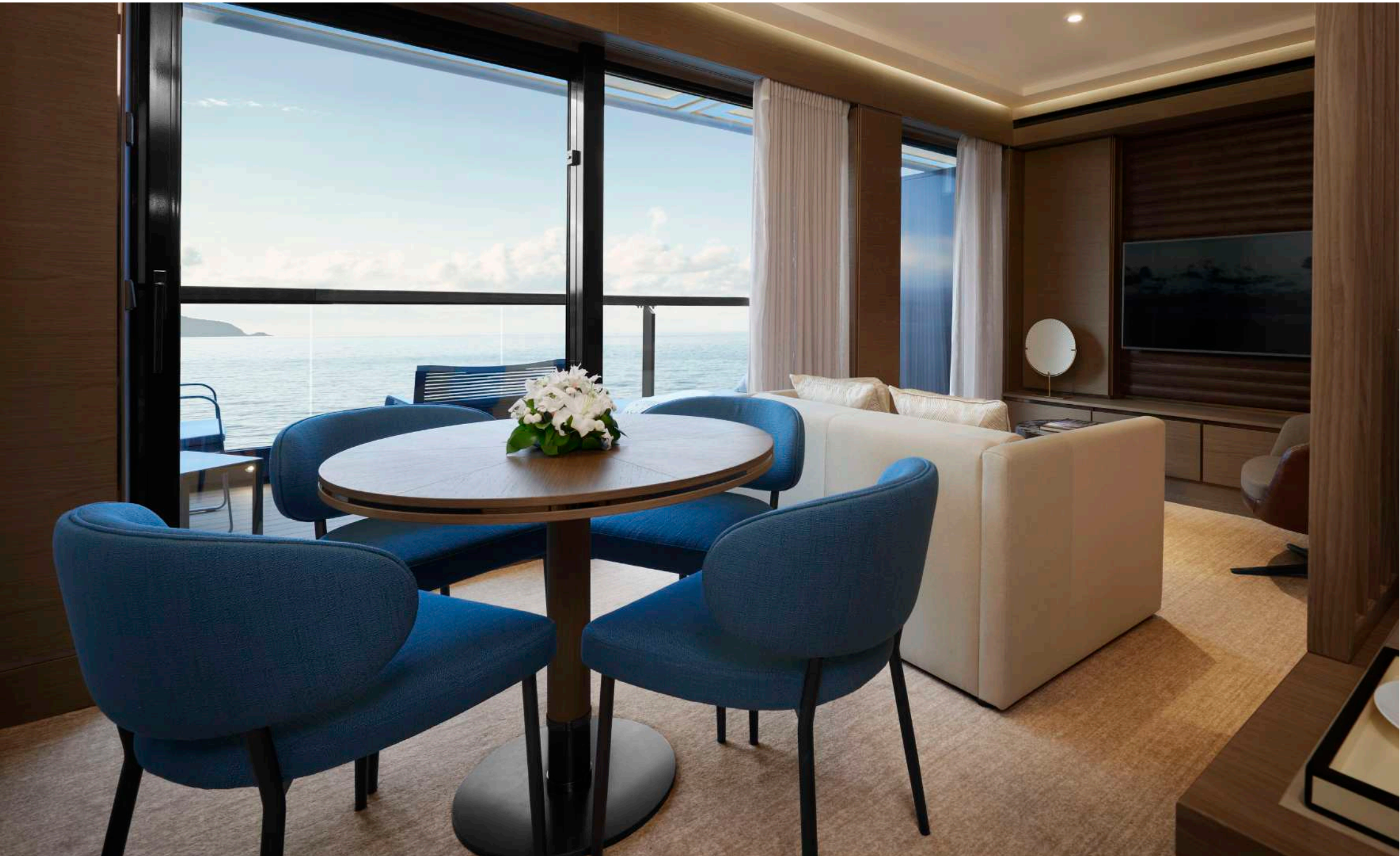
DECKS: 6 / 7 / 8

ADA SIGNATURE SUITE AVAILABLE UPON REQUEST

TO VIEW VIDEO, [CLICK HERE](#) 

AMENITIES

- Modern living and dining area
- Double vanity bathroom with modern soaking tub and separate shower
- Convertible sleep sofa
- Digital flat screen televisions
- Double vanity mirror and hair dryer



THE TERRACE SUITES

SUITE SIZE: 300 SQ FT / 28 SQ M
TERRACE SIZE*: UP TO 81 SQ FT / 7.5 SQ M
NUMBER OF SUITES: 90
DECKS: 5 / 6 / 7 / 8

*EXPANDED TERRACE ON DECKS 5 AND 6
ADA TERRACE SUITES AVAILABLE UPON REQUEST

TO VIEW VIDEO, [CLICK HERE](#) 



AMENITIES

- Double vanity bathroom with modern shower system
- Select Terrace Suites have the ability to convert into an expanded living and dining area or remain a second bedroom when connected to the adjacent suite.
- Two Terrace Suites on board are ADA suites
- Digital flat screen television
- Double vanity mirror and hair dryer





**THE RITZ-CARLTON
YACHT COLLECTION**

For more information visit
RITZCARLTONYACHTCOLLECTION.COM
or contact your travel professional.