

# Antarctic and Sub-Antarctic Sea Voyages

**2027-28 SEASON**



Antarctic Peninsula • South Georgia • Chilean Fjords • Tierra del Fuego  
The Falkland Islands (Islas Malvinas)

**Antarctica21**  
Fly & Sail Expeditions



SUMMARY

4	Explore Antarctica, the Southern Ocean, and the Chilean Fjords	19	DATES & PRICES	31	PLANNING YOUR TRIP
5	Traveling on our Small Expedition Ships	20	Dates & Prices	32	Arrival & Departure Details
6	Our Company	22	Inclusions	33	Hotel & Transfer Package
7	ITINERARIES	23	EXPERIENCES & ADVENTURES	34	Packing for Your Trip
8	Itineraries at a Glance	24	Explorers House	35	Useful Tips
9	Patagonia & Chilean Fjords	25	A Glimpse into Expedition Cruising	36	Important Trip Details
10	Falklands (Malvinas)	26	Life on Board		
11	Falklands (Malvinas) & South Georgia	27	Sea Kayaking		
12	Falklands (Malvinas), South Georgia & Antarctica	28	Hiking & Snowshoeing in Antarctica		
13	Antarctic Small Ship Expedition	29	Responsible Tourism in Antarctica & The Sub-Antarctic Regions		
14	VESSELS	30	Our Commitment to Sustainability		
15	Magellan Discoverer				
17	Magellan Explorer				



Embark on a boutique  
adventure with an  
unparalleled style





# EXPLORE ANTARCTICA, THE SOUTHERN OCEAN, AND THE CHILEAN FJORDS



## THE SOUTHERN OCEAN

The remote islands of the Southern Ocean are magical and wild places. In the Falklands Islands (Islas Malvinas), see peaceful bays rich in wildlife and learn about the daily life of the people who make this remote outpost of British culture home. In South Georgia, be amazed by sharp snowy peaks that jut out of the sea and take in some of the largest wildlife colonies in the world.

## ANTARCTICA

A land that holds 90% of Earth's ice, Antarctica stuns visitors with its awe-inspiring beauty. See peaceful bays dotted with colossal icebergs; cruise along deep fjords and see massive glaciers.

## CHILEAN FJORDS

In the Chilean Patagonia, one of the southernmost regions of the world, sail between massive blue-hued glaciers and the sharp peaks of the Andes mountains. This untamed terrain is home to fjords, channels, and islets with beaches teeming with marine wildlife, birds, and stunning natural landscapes best accessed by ship or Zodiac.

## ADVENTURE

Feel the spray of seawater on your cheeks as you cruise in a Zodiac to shore. Follow in the footsteps of early explorers as you explore with Antarctica21. Join our optional Sea Kayaking and Hiking & Snowshoeing programs.

## WILDLIFE

Penguins, whales, seals, and seabirds congregate in the Southern Ocean during the austral summer. Present in large numbers, you will move along in their world, finding endless inspiration for photographs.

## MEMORIES

Setting foot on these remote shores is both a privilege and a profound experience. You will bring home unforgettable tales, arousing curiosity and admiration. You will create inspiring narratives that will be cherished and recounted for years to come.

# TRAVELING ON OUR SMALL EXPEDITION SHIPS

*Our Antarctic and Sub-Antarctic sea voyages are high-end wilderness adventures, not just cruises. Your home away from home, our small ships allow you to explore remote and beautiful lands in comfort.*

## KEY BENEFITS

**EXCLUSIVITY** — An upscale small-ship experience

**SPEED** — Efficient disembarkation

**VALUE** — The best value and the most affordable prices

## EXCLUSIVE ADVENTURE

Feeling more like private yachts than cruise ships, our small expedition vessels give you privileged access to Antarctica and southern latitudes, taking you where larger ships cannot. With fewer travelers, disembarkation is fast and efficient, so you spend more time exploring, not waiting for your turn to disembark and explore on Zodiac or on land.

## UNPARALLELED VALUE

Your expedition will be led by an expert team of at least 13 polar guides. Our sea voyages have one of the highest staff-to-traveler ratios in the industry and offer an extensive list of trip inclusions for you to enjoy. Our rates start at only \$5,995 USD per person, making these wilderness expeditions of extraordinary value.







## OUR COMPANY

*Antarctica21 was founded in 2003 by visionaries who believed there was a better way to travel to Antarctica. From the invention of the Antarctic air-cruise to the building of the first Antarctica21 ship, we continue in our quest for innovation and sustainability.*

### OUR STYLE AND PHILOSOPHY

Antarctica21 is a boutique specialist focused on designing and delivering adventurous yet elegant small-scale expeditions. We aim to offer guests the perfect balance between active exploration and high-quality hospitality.

### OUR TEAM

International Antarctic pilots, experienced sea captains, expert polar guides, academics, and seasoned travel professionals create the Antarctica21 experience. As an accredited provider company with PTGA (Polar Tourism Guides Association), we ensure that our team is trained

to the highest and most current polar guiding standards. With passion, creativity, and dedicated teamwork, each expedition is handcrafted, unique, and personal.

### COMMITMENT

Antarctica21 is the leader in this fast-growing segment of Antarctic tourism, constantly developing and innovating its programs and operations. As a member of the International Association of Antarctica Tour Operators (IAATO) and a CarbonNeutral® certified company, we consider every detail of our planning and operations, working to reduce our environmental impact.



# ITINERARIES







## ITINERARIES AT A GLANCE

*During the 2027-28 season, Antarctica21 offers five sea voyage itineraries:*

### PATAGONIA & CHILEAN FJORDS

11 DAYS / 10 NIGHTS

- ◆ A wilderness and cultural journey in Southern Chile
- ◆ Caleta Tortel and Madre de Dios Island
- ◆ Iconic Torres del Paine National Park
- ◆ Double accommodation from \$6,495 USD per person

### FALKLANDS (MALVINAS)

10 DAYS / 9 NIGHTS

- ◆ A wilderness expedition to the Falklands (Malvinas)
- ◆ Dramatic landscapes and rich wildlife
- ◆ A rich history and cultural heritage
- ◆ Double accommodation from \$6,795 USD per person

### FALKLANDS (MALVINAS) & SOUTH GEORGIA

17 DAYS / 16 NIGHTS

- ◆ A wilderness expedition in the Southern Ocean
- ◆ The Falkland Islands (Islas Malvinas)
- ◆ In-depth visit to South Georgia
- ◆ Double accommodation from \$10,995 USD per person

### FALKLANDS (MALVINAS), SOUTH GEORGIA & ANTARCTICA

20 DAYS / 19 NIGHTS

- ◆ A wilderness expedition in the Southern Ocean
- ◆ The Falkland Islands (Islas Malvinas)
- ◆ Visit South Georgia
- ◆ Explore Antarctica
- ◆ Double accommodation from \$15,995 USD per person

### ANTARCTIC SMALL SHIP EXPEDITION

10 DAYS / 9 NIGHTS

- ◆ Visit the White Continent
- ◆ See an abundance of marine mammals
- ◆ An affordable Antarctic experience
- ◆ Double accommodation from \$6,995 USD per person

**Note:** Listed locations are indicative. As with any expedition cruise, routes may vary based on weather, sea conditions, and local authorities' guidance. Safety and guest experience remain our priorities.





# PATAGONIA & CHILEAN FJORDS

*11 Days / 10 Nights*

## ITINERARY

**DAY 1 — Puerto Montt, Embarkation.** Your journey begins in Puerto Montt, Chile, with boarding between 15:00 hrs (3:00 PM) and 16:00 hrs (4:00 PM). After all mandatory drills, the ship sets sail towards Quilén on Chiloé Island.

**DAY 2 — Chonos Archipelago.** At the far east of the Chonos Archipelago, explore a temperate rainforest and subantarctic coastal ecosystems on Kent Island. Often linked to the mysterious Isla Friendship, the island combines natural beauty with local lore, including UFO sightings, miraculous healings, and stories that blur the line between myth and reality.

**DAY 3 — Caleta Tortel.** After crossing the storied Golfo de Penas, discover Caleta Tortel, a coastal village nestled between the mouth of the Baker River and a quiet cove along the Baker Channel. Stretching for kilometers, the small town is made up of stilt houses in the traditional Chilotan style, perched above the shoreline. There are no conventional streets here. Instead, wooden walkways, built with Guaitecas cypress, wind through the village, giving it a remarkable look and a unique culture.

**DAY 4 — Pío XI Glacier.** The expedition continues navigating south towards the Messier Channel. We sail through the dramatic 18-meter-wide (59-foot-wide) English Narrows on our route to Pío XI glacier, to take a closer look at the Southern Icefield. Pío XI is the largest glacier in the Southern Hemisphere beyond Antarctica. Unlike most glaciers and despite global warming, Pío XI has experienced significant growth in recent decades, being the only one to expand steadily every year.

**DAY 5 — Madre de Dios Island.** Today, we venture to Madre de Dios Island, a remote and rarely visited land in the Chilean fjords. Known for its spectacular limestone cliffs, caves, and glaciers, Madre de Dios Island reveals a striking landscape shaped by strong winds and the sea. Experience its rugged beauty and remoteness, where untouched nature and striking geology converge at the edge of Patagonia.

**DAY 6 — Las Montañas Channel.** Sail through a breathtaking fjord in Chile's Aysén Region, a 60-kilometer stretch framed by steep, snow-capped peaks of the Andes. Along the way, waterfalls cascade through lush temperate

rainforests, and glaciers spill directly into the sea. If conditions permit, prepare to disembark for an up-close encounter with the majestic Bernal Glacier.

**DAY 7 — Torres del Paine National Park.** Step ashore and board a private bus that will take you into the heart of Patagonia's most iconic landscapes, where granite towers pierce the sky, turquoise lakes shimmer, and a diverse array of wildlife roam freely amid the untamed wilderness.

**DAY 8 — Strait of Magellan and Seno de Agostini.** While heading south along the Magellan Strait, we enter the secluded fjords of Tierra del Fuego and discover the remote coastline of Francisco Coloane Marine Park, a vital feeding ground for whales in the southern hemisphere. Later during the day, we aim to reach Seno de Agostini, a spectacular fjord framed by steep mountains and hanging glaciers cascading from the Darwin Range. If conditions allow, we disembark at the Aguila glacier.

**DAY 9 — Beagle Channel, Garibaldi Glacier.** The Beagle Channel, a narrow waterway shared by Chile and Argentina in the Tierra del Fuego archipelago, is named after the fires seen in Indigenous settlements by early European explorers. As we sail through this remote passage, dramatic ice formations descend from the snow-capped Darwin Range into the sea. Along Glacier Alley, we pass five majestic glaciers: Holanda, Italia, Francia, Alemania, and Romanche. Conditions permitting, we access the Garibaldi fjord, surrounded by hanging glaciers and waterfalls close enough to touch. Together with the Strait of Magellan and the Drake Passage, the Beagle Channel is one of only three routes connecting the Pacific and Atlantic Oceans in South America.

**DAY 10 — Yendegaia National Park.** Once a private ranch, the remote and beautiful Yendegaia National Park now protects pristine forests, rivers, and fjords. Enjoy the striking contrast between the southern Andes and the island's open plains, home to guanacos, foxes, and soaring condors.

**DAY 11 — Ushuaia, Argentina, Disembarkation.** Morning arrival in Ushuaia and disembarkation.



OPERATED ON

Magellan Discoverer  
& Magellan Explorer

Note: In April 2028, this journey is also available in reverse itinerary on both ships, beginning in Ushuaia and ending in Puerto Montt. Request a description of the northbound itinerary at [sales@antarctica21.com](mailto:sales@antarctica21.com).

# FALKLANDS (MALVINAS)

*10 Days / 9 Nights*

## ITINERARY

**DAY 1 — Ushuaia, Embarkation.** Your journey begins in Ushuaia, Argentina. Board your small ship and set sail along the scenic Beagle Channel, charting a course toward the Falkland Islands.

Important note: Boarding in Ushuaia is exclusively between 15:00 hrs (3:00 PM) and 16:00 hrs (4:00 PM). At 16:00 hrs (4:00 PM), boarding will close. Please be on time. Keep your passport in hand and allow enough time to clear port security and reach the vessel.

**DAY 2 — At Sea.** As we journey across open waters, enjoy boutique amenities on board and join our expert-led lectures and presentations.

**DAY 3 — New Island, Carcass Island.** Weather permitting, the morning might bring us to New Island, one of the Falklands' most remote and visually striking locations, rich in wildlife. Towering cliffs and grassy slopes may host colonies of southern rockhopper penguins, imperial shags, and black-browed albatross. In the afternoon, we visit Carcass Island, a picturesque haven known for its rolling hills, sandy beaches, and sheltered bays. This wildlife-rich destination offers excellent opportunities to spot gentoo and Magellanic penguins, along with a variety of native bird species such as tussac birds and striated caracaras. Its tranquil setting and vibrant flora make it a favorite for photography and nature walks.

**DAY 4 — Steeple Jason Island, Saunders Island.** If weather and sea conditions permit, we might land on the remote and dramatic Steeple Jason Island, known for hosting the world's largest colony of black-browed albatross. Rockhopper penguins and imperial shags also share the rugged cliffs. In the afternoon, we enjoy a long white-sand beach while we visit Saunders Island. A true wilderness experience, the main attractions begin with the majestic king penguins, often seen along the shoreline or mingling among other species. You'll also encounter rockhopper penguins, nesting black-browed albatross, and sub-Antarctic gentoo penguins, creating an unforgettable wildlife spectacle.

**DAY 5 — Volunteer Point, Port Stanley.** In the morning, if weather conditions allow, we visit Volunteer Point, a remote and spectacular location that hosts the largest King penguin colony in the Falklands, with over

1,000 breeding pairs. Here, majestic Kings share the beach with gentoo and magellanic penguins, creating one of the most iconic wildlife experiences in the South Atlantic. In the afternoon, our journey continues with a call at Port Stanley, the capital of the Falklands. Join guided walking tours or wander independently to discover the town's charming pubs, historic sites, maritime museum, and souvenir shops. A stroll along Ross Road offers views of poignant war memorials and everyday island life.

**DAY 6 — Bleaker Island, Sea Lion Island.** In the morning, we explore Bleaker Island, home to abundant coastal birdlife and colonies of gentoo, rockhopper, and magellanic penguins. The island's flat terrain and wide beaches provide excellent conditions for photography and relaxed exploration. In the afternoon, weather allowing, we continue to Bull Point on East Falkland, where windswept dunes and wild coastlines host elephant seals, sea lions, and nesting seabirds.

Don't miss the sunset as we transit the Falkland Sound, a magical moment on the journey.

**DAY 7 — Pebble Island, Keppel Island.** Our morning includes a landing on Pebble Island, noted for its varied terrain and prolific birdlife. Later, on Keppel Island, we'll discover traces of a historic mission of settlement and opportunities to spot upland geese, caracaras, and other native species along gentle trails.

**DAY 8 — West Point Island.** In the morning, we visit West Point Island, a remote gem known for its dramatic coastal scenery and rich birdlife. An easy hike takes you to a spectacular colony of black-browed albatross and rockhopper penguins, perched on rugged cliffs overlooking the sea. This is one of the Falklands' most iconic wildlife encounters, complemented by a warm welcome and a traditional Falklands tea experience in this charming and secluded setting. In the afternoon, we set sail northward, reflecting on the unforgettable wildlife encounters and scenic vistas.

**DAY 9 — At Sea.** Enjoy the ship's hospitality as we make our way back to South America.

**DAY 10 — Ushuaia, Disembarkation.** Arrival and disembarkation in Ushuaia.



 **OPERATED ON**  
Magellan Explorer



# FALKLANDS (MALVINAS) & SOUTH GEORGIA

*17 Days / 16 Nights*

## ITINERARY

**DAY 1 — Punta Arenas, Embarkation.** From 10:00 hrs (10:00 AM), make your way to Explorers House in Punta Arenas and enjoy the facilities. At 14:30 hrs (2:30 PM), a group transfer will take you to the port for embarkation. As we sail along the Strait of Magellan, our Expedition Team will introduce the history of this fabled sea route.

**DAY 2 — At Sea.** Enjoy the ship's amenities and on board program as we make our way to the Falklands (Malvinas). Our engaging series of lectures and presentations begins.

**DAY 3 — Saunders Island, West Point Island.** We enjoy the long white-sand beach during a morning visit to Saunders Island. A wilderness experience, the main attractions are rockhopper penguins, nesting black-browed albatross, and sub-Antarctic gentoo penguins. In the afternoon, we visit West Point Island. There is an option for an easy hike to a nesting black-browed albatross colony, bird watching, and a typical Falklands tea experience.

**DAY 4 — Port Stanley.** Join our expedition team on guided walking tours of Port Stanley. Or explore on your own and absorb the atmosphere, grabbing lunch at the local pub, visiting the maritime museum, the church, hunting for souvenirs, or walking down Ross Road, paying tribute at the war memorials at the waterfront.

**DAY 5-6 — At Sea.** As we sail towards South Georgia, attend presentations on the history and fauna of the archipelago. In the company of expert guides, watch for wildlife from the lounge or from the outside decks. You may spot magnificent seabirds, such as albatrosses and petrels, as well as different species of whales.

**DAY 7 — Elsehul Bay.** Depending on sea conditions over the previous days, arrival is planned for the afternoon. Provided we receive approval from the South Georgia government, we plan to do an evening Zodiac cruise at Elsehul Bay.

**DAY 8 — Grytviken, Fortuna Bay.** Our first landing could be at Grytviken. We clear Customs and then visit the historical site with the museum and Ernest Shackleton's grave. We land at Fortuna Bay / Stromness in the afternoon to see king penguins. Here, we learn more about Shackleton and his expedition, and there is also an optional 2-3 hour "Shackleton walk."

**DAY 9 — Gold Harbour, Drygalski Fjord.** In the morning, we plan a landing at Gold Harbour, a spectacular location with king penguins, elephant seals, and hanging glaciers. There are also sooty albatrosses here. If weather allows, we ship cruise across the Drygalski Fjord in the afternoon.

**DAY 10 — St Andrews Bay, Ocean Harbour.** St Andrews Bay is the destination of our morning excursion. The highlights here are a shipwreck and the remains of the whaling industry. We see one of the world's largest king penguin colonies and elephant seal bulls. We plan a Zodiac cruise in the afternoon and landing at Ocean Harbour.

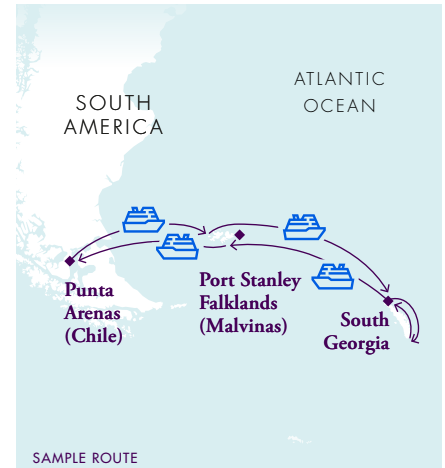
**DAY 11 — Salisbury Plain.** Depending on weather conditions, we plan to visit Salisbury Plain to observe more king penguins and stunning landscapes. After this morning activity, we start our way back to the Falkland Islands.

**DAY 12-14 — At Sea.** Our onboard education program continues as we make our way back to the Falkland Islands (Islas Malvinas).

**DAY 15 — Bleaker Island.** Evening landing at Bleaker Island, a natural reserve famous for its large variety of birds.

**DAY 16 — At Sea**

**DAY 17 — Punta Arenas, Disembarkation.** Upon arrival at Punta Arenas, we disembark and take a group transfer to the town center, where the expedition will end. Explorers House remains available to you for the day.



OPERATED ON

Magellan Discoverer  
& Magellan Explorer

# FALKLANDS (MALVINAS), SOUTH GEORGIA & ANTARCTICA

*20 Days / 19 Nights*

## ITINERARY

**DAY 1 — Punta Arenas, Embarkation.** From 10:00 hrs (10:00 AM), make your way to Explorers House in Punta Arenas and enjoy Antarctica21's exclusive expedition center. At 14:30 hrs (2:30 PM), a group transfer will take you to the port for embarkation. As we sail along the Strait of Magellan, our Expedition Team provides an insightful introduction to the history of this fabled sea route.

**DAY 2 — At Sea.** Enjoy the ship's hospitality as we make our way to the Falklands (Malvinas). Our engaging series of lectures and presentations begins.

**DAY 3 — Saunders Island, West Point Island.** During a morning visit to Saunders Island, we enjoy the long white-sand beach. During this wilderness experience, the main attractions are observing rockhopper penguins, nesting black-browed albatross, and sub-Antarctic gentoo penguins. In the afternoon, we visit West Point Island. There is an option for an easy hike to the settlement, bird watching, and a typical Falklands tea experience.

**DAY 4 — Port Stanley.** Join our expedition team on guided walking tours of Port Stanley or explore on your own and absorb the atmosphere of this isolated outpost in the South Atlantic.

**DAY 5-6 — At Sea.**

**DAY 7 — Elschul Bay.** Evening Zodiac cruise at Elschul Bay, subject to crossing and permits from the South Georgia government.

**DAY 8 — Salisbury Plain, Possession Bay.** Morning visit to Salisbury Plain to observe king penguins and stunning landscapes. In the afternoon, we will aim to do a zodiac cruise in the stunning Possession Bay or to visit the nearby areas.

**DAY 9 — Grytviken, Fortuna Bay / Stromness.** Morning landing at Grytviken, where we complete customs formalities before visiting the historic site, which includes a museum and Ernest Shackleton's grave. In the afternoon, we plan for a landing at Fortuna Bay / Stromness, encounter king penguins and learn more about Shackleton and his expedition. There is an optional 2-3 hour "Shackleton walk" if snow and weather conditions allows.

**DAY 10 — St. Andrews Bay, Drygalski Fjord.** In the morning, we visit St. Andrews Bay, home to one of the largest king penguin colonies and impressive elephant seal bulls. If weather allows, we will perform a ship cruise across the Drygalski Fjord in the afternoon.

**DAY 11-12 — At Sea.**

**DAY 13 — Elephant Island.** In the afternoon, we explore Elephant Island. While a landing here is unlikely, we will see the island from the ship or, if sea conditions allow, from a Zodiac.

**DAY 14-17 — Antarctic Peninsula & South Shetland Islands.** We cruise along the Antarctic Peninsula and among the South Shetland Islands, visiting sites in the Antarctic Sound and the Gerlache Strait. The voyage may include visits to sites such as Gourdin Island, Brown Bluff, Half Moon Island, Deception Island, Wilhelmina Bay, the Lemaire Channel, Cuverville Island, the Melchior Islands, or other magnificent places.

**DAY 18-19 — At Sea.**

**DAY 20 — Ushuaia, Disembarkation.** Arrival in Ushuaia and disembarkation.



OPERATED ON

Magellan Discoverer  
& Magellan Explorer



# ANTARCTIC SMALL SHIP EXPEDITION

*10 Days / 9 Nights*

## ITINERARY

**DAY 1 — Ushuaia, Embarkation.** Your journey begins in Ushuaia, Argentina. Board your ship and sail along the Beagle Channel towards Antarctica.

Important note: Boarding in Ushuaia is exclusively between 15:00 hrs (3:00 PM) and 16:00 hrs (4:00 PM). At 16:00 hrs (4:00 PM), boarding will close. Please be on time. Keep your passport in hand and allow enough time to clear port security and reach the vessel.

**DAY 2-3 — Crossing the Drake Passage.** Sail towards Antarctica across the famous passage named in honor of Sir Francis Drake, the great 16th-century British explorer. As you sail en route to the South Shetland Islands, attend an engaging program of lectures and presentations. In the company of expert guides, watch for wildlife from the glass-enclosed lounge or the outside decks. You may spot magnificent sea birds, such as albatrosses and petrels, as well as different species of whales on their way south to Antarctica. After crossing the Antarctic Convergence, the environment changes noticeably. Keep your camera ready, as this is the time to watch for the first icebergs and the sight of Antarctic land.

**DAY 4-7 — Exploring Antarctica.** Cruise between the South Shetland Islands and the western coast of the Antarctic Peninsula, sailing along ice-filled fjords and among spectacular icebergs while enjoying the company of sea birds, penguins, seals, and whales. Each day, disembark by Zodiac boat and explore the landscape together with expert polar guides. Enjoy spectacular vistas from the glass-enclosed lounge of the ship while sharing your daily adventures with fellow guests. No journey is the same, as flexibility is the key to success in Antarctica. The Expedition Team sets the voyage route to take advantage of the ever-changing opportunities provided by nature, crafting a unique and extraordinary experience each time. While the exact itinerary changes with each expedition, you will explore several locations that offer the best possible overview of the varied Antarctic environment. Your voyage may include visits to sites such as Paulet Island, Hope Bay, Port Lockroy, Petermann Island, Paradise Bay, Deception Island, the Lemaire Channel, or many other magnificent places. Our adventure will be very active, with several daily landings and cruises in Zodiacs,

lectures, and a very enjoyable time on board. Departure from Antarctica will be in the afternoon or evening of Day 8, depending on weather conditions.

**DAY 8-9 — Sailing back to South America.** Return to South America with a northbound crossing of the Drake Passage. Relax and take the time to watch for wildlife from the bridge or outside decks and participate in the presentations offered on various Antarctic topics in the lounge.

**DAY 10 — Ushuaia, Disembarkation.** The program ends upon arrival at the port in Ushuaia.



OPERATED ON

Magellan Discoverer  
& Magellan Explorer



# VESSELS





# MAGELLAN DISCOVERER

## HYBRID-ELECTRIC · SOPHISTICATED DESIGN

Magellan Discoverer is our newest addition to the fleet, purpose-built to enhance our Antarctic air-cruise experience. Crafted in Chile, the vessel meets the latest Polar Code standards and will begin sailing in 2026.

The boutique vessel offers five accommodation categories. All cabins feature private balconies and a king-size bed that can be converted as two twin beds. Each cabin has a wardrobe, individual heating control, a sitting area, and a private bathroom with a shower.

On board, guests can enjoy a panoramic observation lounge and presentation room equipped with cutting-edge audio-visual technology. The ship also boasts a spacious dining room, a bar, a library, a meeting room, a gym, a sauna with an open view, and a medical clinic.

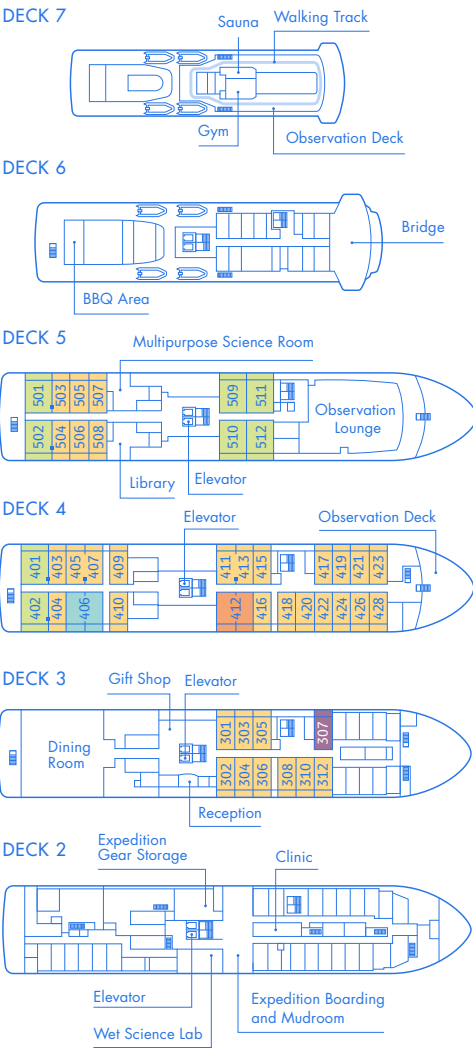
The top deck features a 360° walking track, providing unparalleled vantage points for viewing wildlife and enjoying the Antarctic landscape. With a fleet of 12 Zodiacs, the vessel is perfectly suited for daily outdoor excursions, disembarking guests on land at once.

The fitness center aboard Magellan Discoverer has been designed and built by the professionals at Anytime Fitness. For more information, see anytimefitness.com.

To learn more about this vessel, visit:  
antarctica21.com/dis

### Specifications

Passengers:	96 for sea voyages
Expedition Staff & Crew:	67
Lifeboats:	2, fully enclosed, capacity of 124 (in addition to 8 life rafts, capacity of 120)
Length:	94 m (308.4 ft)
Breadth:	17.2 m (56.4 ft)
Draft:	4.5 m (14.8 ft)
Propulsion:	Diesel engines, 3,440 kW
Ice Class:	LR PC6
Cruising Speed:	14 knots in open water



■ Door connection available

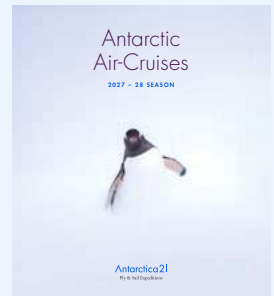
### Cabins

Category	Approx. Size	Details
Single Veranda Cabin	280 ft <sup>2</sup> 26 m <sup>2</sup>	Cabin with sitting area and balcony
Grand Veranda Suite	409 ft <sup>2</sup> 38 m <sup>2</sup>	Suite with sitting area and balcony
Family Veranda Suite	560 ft <sup>2</sup> 52 m <sup>2</sup>	Two-room suite with sitting area and balcony
Deluxe Veranda Cabin	280 ft <sup>2</sup> 26 m <sup>2</sup>	Cabin with sitting area and balcony
Triple Veranda Suite	560 ft <sup>2</sup> 52 m <sup>2</sup>	Two-room suite with sitting area and balcony





**GET YOUR  
AIR-CRUISE BROCHURE**



For a digital copy of our 2027-28 Antarctic Air-Cruise brochure please send a request to [sales@antarctica21.com](mailto:sales@antarctica21.com).

# MAGELLAN EXPLORER

## INNOVATIVE TECHNOLOGY · MODERN DESIGN

Magellan Explorer is a modern expedition vessel custom-built for our Antarctic air-cruises. The ship was constructed in Chile to the latest Polar Code specifications and launched in 2019.

Magellan Explorer has seven categories of accommodation, including dedicated single cabins. All cabins except Porthole Cabins feature private balconies. All double cabins, except four, have two twin beds that can be configured as one king-size bed. All cabins feature a wardrobe, an individually controlled heating system, a sitting area, and a private bathroom with a shower.

The ship features a glass-enclosed observation lounge and presentation room with state-of-the-art audio-visual equipment, a spacious and stylish dining room, a well-stocked bar, a library, a meeting room, a gym, a sauna, and a medical clinic. The forward-facing observation deck leads to the ship's bow, which is accessible to guests to offer proximity to marine wildlife. The ship has a fleet of 10 Zodiacs that are well suited for disembarking and wildlife watching.

The fitness center aboard Magellan Explorer has been designed and built by the professionals at Anytime Fitness. For more information, see [anytimefitness.com](https://anytimefitness.com).

To learn more about this vessel, visit:  
[antarctica21.com/mag](https://antarctica21.com/mag)

### Specifications

Passengers:  
96 maximum on air-cruises

Expedition Staff & Crew:  
60

Lifeboats:  
2, fully enclosed, capacity of 160 (in addition to 8 life rafts, capacity of 160)

Length:  
90.7 m (297.6 ft)

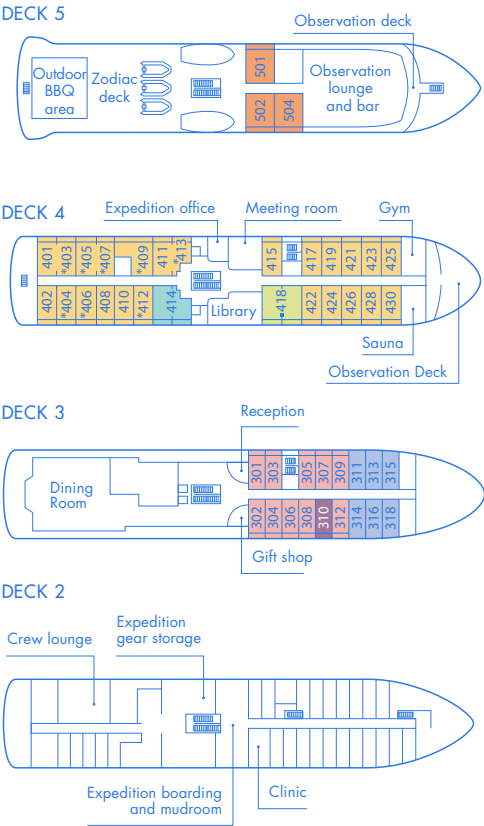
Breadth:  
16.2 m (53.1 ft)

Draft:  
4.3 m (14.1 ft)

Propulsion:  
Diesel engines, 3,440 kW

Ice Class:  
LR PC6

Cruising Speed:  
14 knots in open water



\* Only available with queen-size bed

### Cabins

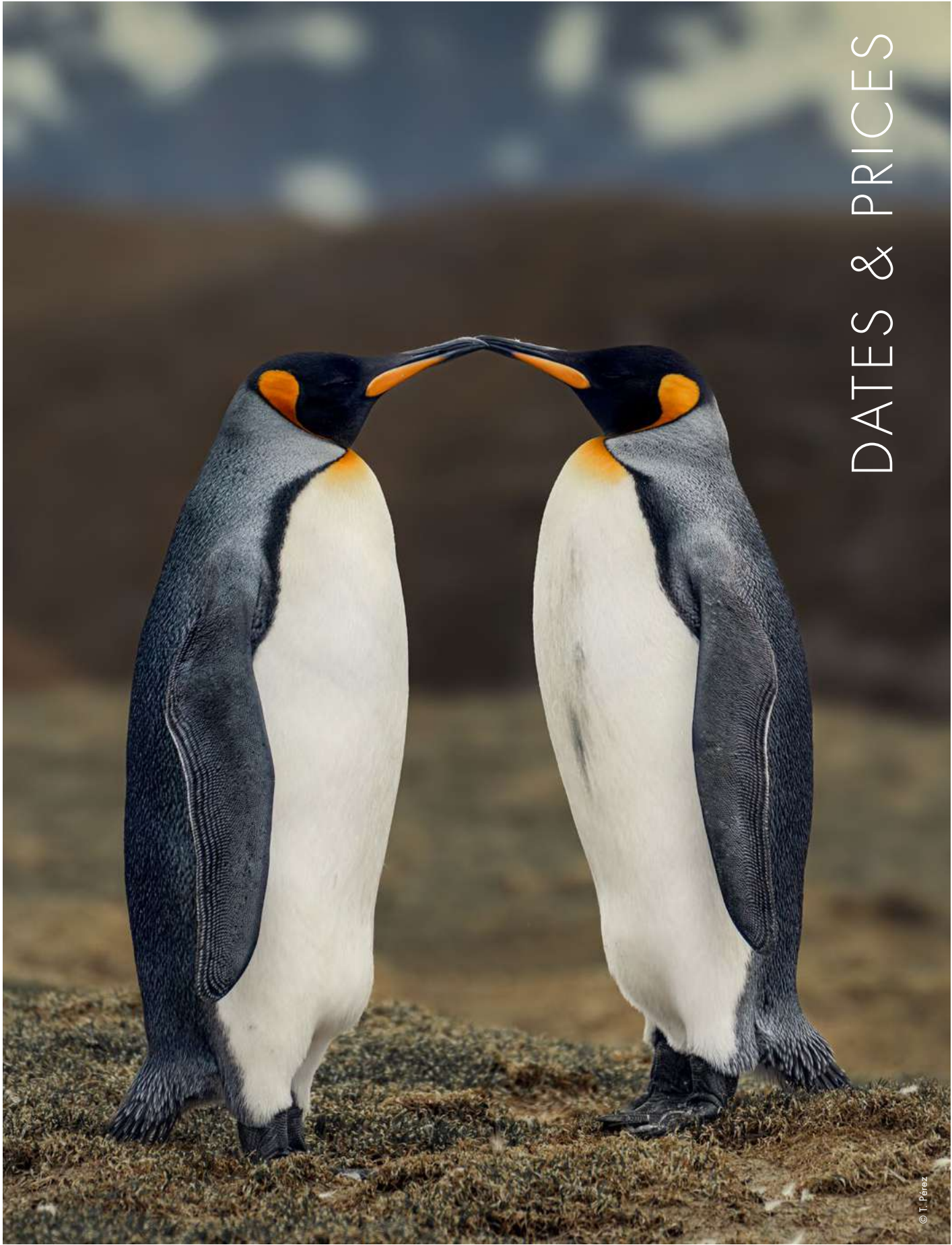
Category	Approx. Size	Details
Single Veranda Cabin	210 ft <sup>2</sup> 19 m <sup>2</sup>	Cabin with sitting area and balcony
Penthouse Suite	360 ft <sup>2</sup> 33 m <sup>2</sup>	Suite with sitting room, balcony and bedroom area
Deluxe Suite	480 ft <sup>2</sup> 44 m <sup>2</sup>	Two-room suite with sitting room, balcony and bedroom
Deluxe Veranda Cabin	240 ft <sup>2</sup> 22 m <sup>2</sup>	Cabin with sitting area and balcony
Veranda Cabin	210 ft <sup>2</sup> 19 m <sup>2</sup>	Cabin with sitting area and balcony
Porthole Cabin	200 ft <sup>2</sup> 18 m <sup>2</sup>	Cabin with sitting area and porthole windows
Triple Suite	480 ft <sup>2</sup> 44 m <sup>2</sup>	Two-bedroom suite with balcony, and sitting area











# DATES & PRICES

# DATES & PRICES

## Aboard Magellan Explorer

Code	Start / End	Days / Nights	Itinerary	Prices (USD)								
				Triple Suite	Porthole Cabin	Veranda Cabin	Deluxe Veranda Cabin	Deluxe Suite	PH Suite	Single Veranda Cabin	KAY	HS
MAG01-CF	Sep 13 - 23, 2027	11/10	Patagonia & Chilean Fjords	\$5,995	\$6,495	\$6,995	\$7,495	\$13,995	\$8,995	\$11,795	\$995	—
MAG02-FS	Sep 26 - 12, 2027	17/16	Falklands (Malvinas) & South Georgia	\$19,295	\$10,995	\$13,495	\$14,495	\$28,895	\$15,995	\$24,895	—	—
MAG03-FS	Oct 12 - 28, 2027	17/16	Falklands (Malvinas) & South Georgia	\$19,295	\$10,995	\$13,495	\$14,495	\$28,895	\$15,995	\$24,895	—	—
MAG04-SG	Oct 28 - Nov 16, 2028	20/19	Falklands (Malvinas), South Georgia & Antarctica	\$24,995	\$15,995	\$17,995	\$18,795	\$37,495	\$21,795	\$33,295	\$995*	Available*
MAG28-SE	Mar 26 - April 4, 2028	10/9	Antarctic Small Ship Expedition	\$10,995	\$6,995	\$7,995	\$8,495	\$16,895	\$8,995	\$14,795	\$995	Available
MAG29-FK	Apr 4 - 13, 2028	10/9	Falklands (Malvinas)	\$6,495	\$6,795	\$7,495	\$7,995	\$14,995	\$9,495	\$13,795	—	—
MAG30-CF	Apr 13 - 23, 2028	11/10	Patagonia & Chilean Fjords**	\$5,995	\$6,495	\$6,995	\$7,495	\$13,995	\$8,995	\$11,795	\$995	—

## Aboard Magellan Discoverer

Code	Start / End	Days / Nights	Itinerary	Prices (USD)						
				Triple Veranda Suite	Deluxe Veranda Cabin	Family Veranda Suite	Grand Veranda Suite	Single Veranda Cabin	KAY	HS
DIS01-CF	Sep 24 - Oct 4, 2027	11/10	Patagonia & Chilean Fjords	\$6,995	\$8,795	\$8,795	\$9,995	\$12,795	\$995	—
DIS03-FS	Oct 7 - 23, 2027	17/16	Falklands (Malvinas) & South Georgia	\$20,995	\$15,995	\$15,995	\$17,495	\$29,595	—	—
DIS04-SG	Oct 23 - Nov 11, 2027	20/19	Falklands (Malvinas), South Georgia & Antarctica	\$25,295	\$18,995	\$18,995	\$21,495	\$34,995	\$995*	Available*
DIS27-SE	Mar 17 - 26, 2028	10/9	Antarctic Small Ship Expedition	\$12,595	\$9,495	\$9,495	\$9,995	\$17,495	\$995	Available
DIS28-SE	Mar 26 - Apr 4, 2028	10/9	Antarctic Small Ship Expedition	\$12,595	\$9,495	\$9,495	\$9,995	\$17,495	\$995	Available
DIS29-CF	Apr 4 - 14, 2028	11/10	Patagonia & Chilean Fjords**	\$6,995	\$8,795	\$8,795	\$9,995	\$12,795	\$995	—

KAY = Sea Kayaking in Antarctica and Patagonia. We recommend booking the Sea Kayaking program upon reservation of your sea voyage.

HS = Hiking & Snowshoeing. Available for booking on board the ship at \$85 USD per person, per excursion.

\* Activities performed only in Antarctica

Note: Rates are per voyage and per person in US dollars based on the selected cabin and occupancy.

\*\* Itinerary operated in reverse, starting in Ushuaia, Argentina, and ending in Puerto Montt, Chile. Request the itinerary description by email at [sales@antarctica21.com](mailto:sales@antarctica21.com).



### A21 LOYALTY BENEFIT

The A21 Loyalty Benefit gives our returning travelers a 5% reduction on their next trip, including our new Antarctic & Sub-Antarctic Sea Voyage. The reduction applies to all repeat travel with Antarctica21. We hope to see you again!



## DEPOSIT

An initial deposit of \$4,000 USD per person is required to book a cabin, except for Patagonia & Chilean Fjords and Antarctic Small Ship Expeditions, where the deposit is \$1,750 USD per person.

The balance is due in full 120 days prior to departure. Payments can be made by wire transfer or credit card via PayPal, and more payment options are available via WeTravel. Wire transfer costs are to be borne by the sender. Via PayPal or WeTravel are subject to a 2.7% fee (however, the 2.7% fee is not charged on the deposit). Payments received after the due date are subject to a \$250 USD per person late payment fee.

## CHILDREN

Antarctica21 welcomes children aged 12 and above on all its Sea Voyages, with the exception of the Patagonia & Chilean Fjords itinerary, which admits children from 8 years of age. They must be accompanied by a responsible adult who takes full responsibility for the minor and signs a waiver.

## SINGLE TRAVELERS

Single travelers can choose between:

- ◆ Booking a dedicated Single Cabin: no supplement is applied for single use of dedicated Single Cabins.
- ◆ Booking a Twin Cabin for single use: an 85% supplement will be added to the rate per person when booking a limited number of Porthole and Veranda Cabins on Magellan Explorer, and Deluxe Veranda Cabins on Magellan Discoverer. A 100% supplement applies when booking all other categories.
- ◆ Sharing a cabin with another passenger of the same gender: this is available on Magellan Explorer in Porthole and Veranda Cabins, and on Magellan Discoverer in Deluxe Veranda Cabins. Antarctica21 will take care of finding the matching companion.

**Note:** Single travelers who use CPAP machines or other assistive devices, as well as those who have conditions that can be disrupting to others (loud snoring, sleepwalking, etc.), can only book their expedition in a Single Cabin or a Twin Cabin for single use. They cannot book on a twin-share basis.

## FAMILY SAVINGS

For bookings of six travelers or more, contact your sales agent to receive a 5% reduction and information about special booking conditions.

## CHARTERS AND RESERVATIONS BY GROUPS

Full-ship charters and reservations made by and for groups of eight travelers or more are subject to payment and cancellation conditions to be agreed upon by contract.



© T. Pérez

### Terms & Conditions

For a complete list of Terms and Conditions visit [https:// www. antarctica21.com/termsconditions/](https://www.antarctica21.com/termsconditions/), including important details about the following points:

- ◆ Booking Terms
- ◆ Payment, Cancellation and Refund Policies
- ◆ Responsibility
- ◆ Itinerary
- ◆ Admittance
- ◆ Optional Adventure Activities
- ◆ Baggage
- ◆ Law and Jurisdiction



© F. Andreas

# INCLUSIONS



© R. Moraga



© F. Andreas

## INCLUDED IN THE RATE

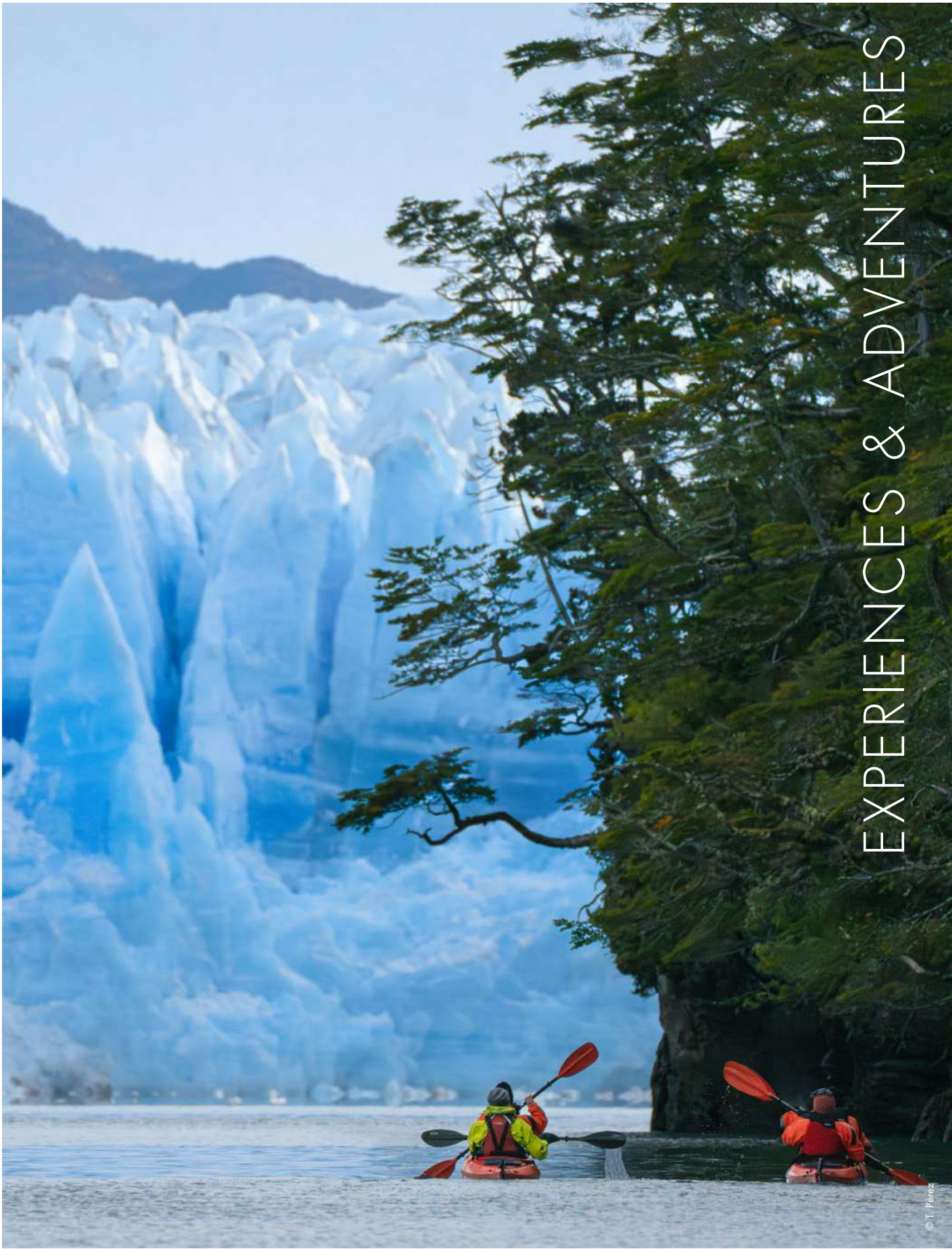
- ◆ Cruise on board the ship indicated for each voyage.
- ◆ Comprehensive pre- and post-voyage information material.
- ◆ For guests visiting Punta Arenas, exclusive access to Explorers House.
- ◆ Daily buffet breakfast and lunch on board the ship, offering a variety of dishes.
- ◆ Three-course dinner served daily on board the ship offering a choice between one of three main courses.
- ◆ Wine, beer, juice, and soft drinks served with lunch and dinner on board the ship.
- ◆ Coffee, tea, chocolate, cappuccino, water, and snacks on board the ship throughout the expedition.
- ◆ Loan of waterproof boots for landing.
- ◆ All guided shore excursions.
- ◆ Lectures and entertainment on board.
- ◆ Access to exclusive content on the Antarctica21 app on board your expedition ship.
- ◆ A voucher for premium internet access. Conditions apply.
- ◆ Landing fees and IAATO passenger fees.

## NOT INCLUDED IN THE RATE

- ◆ Flights, accommodation, meals, excursions, and transfers other than those included in the itinerary corresponding to each voyage.
- ◆ Beverages purchased at the ship's bar.
- ◆ Personal travel insurance.
- ◆ Extra expenses (communication, laundry, souvenirs, etc.).
- ◆ Gratuities.
- ◆ Multi-entry visas for Chile, Argentina, the UK and/or other destinations included in your itinerary, passport expenses, and any arrival and/or departure tax, if applicable.
- ◆ Required application for entry permit to South Georgia (for sea voyages including this destination)



# EXPERIENCES & ADVENTURES





# EXPLORERS HOUSE

## ANTARCTICA21'S EXPEDITION CENTER

*Explorers House is your gateway to Antarctica and Patagonia, the beginning of an experience like no other.*

When visiting Punta Arenas, Explorers House offers an exclusive space where you can interact with our team, review checklists, and get answers to any questions you may have about your trip.

With an area of over 2,000 square meters (21,500 sq ft), you can use this facility like your private club. Relax with a cup of coffee, review a wonderful collection of books, and get to know your travel companions as excitement over the upcoming adventure builds.

Explorers House was designed by renowned architects and was built using sustainable building practices. It features a commercial solar panel system to produce electricity and heat.

Here are some of the services and amenities that you can find at Explorers House:

- ◆ Food and drink services
- ◆ Library
- ◆ Relaxing lounges
- ◆ Amphitheater-style presentation room
- ◆ Gift shop
- ◆ Interactive touch screens
- ◆ High speed internet connection



# A GLIMPSE INTO EXPEDITION CRUISING

*Our boutique expedition style combines small-ship comfort with immersive exploration, unlocking exclusive access to Antarctica and the Sub-Antarctic region.*

Antarctica21's approach creates intimate experiences that deeply connect guests with remote destinations. Our custom-designed small vessels, coupled with a team of passionate polar experts, offer a perfect blend of boutique comfort and adaptability, setting us apart from conventional cruises.

## HUMAN-SCALE TRAVEL

Our small vessels provide unparalleled flexibility and personalization. With low passenger capacity and a high guide-to-guest ratio, we offer spontaneous and calculated itinerary adjustments for unique wildlife encounters. Unlike larger ships, all our guests can disembark simultaneously, maximizing time ashore.

## ADAPTING TO NATURE'S RHYTHM

In Antarctica and the Sub-Antarctic regions, the quickly shifting weather conditions require a flexible approach. Drawing on over two decades of experience, Antarctica21 expertly navigates these challenges. We swiftly and strategically adapt our plans, ensuring rich exploration opportunities.

## A TRANSFORMATIVE JOURNEY

Our expeditions create a small community of explorers. Guests become active participants, contributing their own chapter to Antarctic exploration. This shared adventure fosters a deep appreciation for Antarctica's majestic beauty among guests, guides, and crew, resulting in lasting memories and personal transformations.



## LEARN WITH A21CONNECT

Carefully elaborated by Antarctica21, A21Connect brings education, experience, and science together. The program offers guests opportunities for understanding and gaining knowledge about their destination through multiple touch points during the journey.

Our expert guides lead engaging presentations on board and offer insightful interpretation in the field, while frequent one-on-one moments throughout the journey deepen your understanding of each day's experiences.

Finally, we offer interactive workshops where you can participate and learn: open discussions, photography workshops, citizen science programs that collect data in support of scientists around the world, and more.





# LIFE ON BOARD

*Our custom-designed vessels offer a welcoming sanctuary with a first-class boutique experience for each of our guests.*

## ONBOARD HOSPITALITY, REFINED

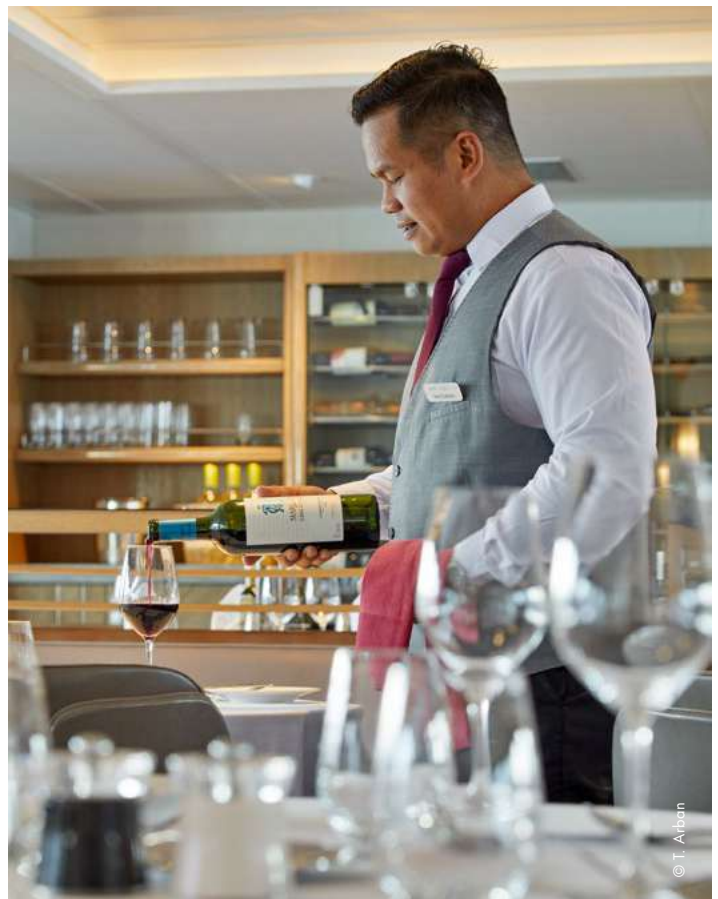
While our core values remain consistent, each ship offers a unique atmosphere. Modern and elegant, Magellan Explorer and Magellan Discoverer boast private balconies in most cabins, perfect for enjoying Antarctica's breathtaking views. Whether you seek privacy in your cabin, social interaction in the lounge, quiet moment in the library, or fresh air on deck, our vessels cater to your preferences. Additionally, we enhance your comfort with thoughtful amenities like reusable water bottles, premium bath products, and nightly turndown service with chocolates.

## SMALL-GROUP EXPERIENCE

With no more than 96 guests on board, our small-ship expeditions create an intimate atmosphere, feeling like an exclusive explorers' club. Our high staff-to-guest ratio allows for meaningful, one-on-one interactions, enriching your journey with insight and care. Whether you prefer quiet reflection in the library, conversation in the panoramic lounge, or time on deck with your gaze fixed on the landscape, you'll find spaces that suit your mood.

## CULINARY EXCELLENCE IN THE SOUTHERN OCEAN

Even in the remote Antarctic region, our skilled chefs craft varied menus with attention to detail. Enjoy multiple courses, fresh salads, fruits, and pastries, complemented with curated Chilean wines and other delightful beverages, all while enjoying the breathtaking views. When the weather allows, you can experience the unique thrill of a deck barbecue amidst the Antarctic landscape.





# SEA KAYAKING

*Experience Antarctica and the Chilean Patagonia from the unique vantage point of a sea kayak. The majestic landscape, the icebergs, and the wildlife presents a unique perspective as you paddle quietly through the icy waters.*

## THE PROGRAM

The sea kayaking program is an optional small-group experience limited to a maximum of 20 participants per expedition who will go on excursions in two separate groups of 10 guests each, on an alternating basis. Each group of 10 guests enjoy one or two excursions throughout the voyage under the guidance and leadership of an experienced Kayak Master.

On our sea voyages, our Patagonia & Chilean Fjords and Antarctic Small Ship Expeditions offer 20 sea kayaking spots per departure, while the Falklands (Malvinas), South Georgia & Antarctica journey accommodates up to 10 sea kayakers.

During your trip in Antarctica and Southern Patagonia, your Kayak Master will work with the Expedition Team to look for the best kayaking opportunities based on suitable and safe weather conditions. A dedicated safety Zodiac will support the group. Each kayaking excursion will be approximately one and a half hours. The Kayak Master will strive to offer some time at the landing site so you can also explore on land. To take part in the kayaking program, you must have proven previous experience, know how to swim, and be able to communicate fluently in English. The minimum age for participation is 15 years, and space is limited. We recommend booking the Sea Kayaking program upon reservation of your expedition.

For complete details, please review the “Sea Kayaking” guide, which is available upon request.

Note: Sea kayaking is offered as a dedicated program, providing 1-2 excursions during the expedition for the same group of participants. It is not possible to join individual, one-off kayaking excursions or rotating participation among family members or groups of friends traveling together.

Payment of the sea kayaking participation fee is due at the time of reservation, and all participants must sign a waiver to join the activity. In the case of cancellation 120 days or more prior to departure, Antarctica21 will refund 50% of the participation fee. In the case of cancellation 119 days or less prior to departure, there will be no refund.




---

**\$995 USD per person per expedition**  
**Book at the time of reservation**

---

# HIKING & SNOWSHOEING IN ANTARCTICA

*See more of the Antarctic landscape with our Hiking & Snowshoeing program. Excursion locations are selected for their scenic appeal and will provide unique viewpoints for your photographs.*

## THE PROGRAM

The Hiking & Snowshoeing program is an optional small-group experience offered on board the ship as a one-off excursion. A Hiking & Snowshoeing Guide leads the group.

During your trip in Antarctica, the Hiking & Snowshoeing Guide will work with the Expedition Leader to look for the best hiking or snowshoeing opportunities within the trip's schedule, based on suitable and safe weather conditions. Each excursion will be approximately one and a half hours in duration. Depending on the time of the year and the conditions of the terrain, some excursions may require the use of snowshoes and/or trekking poles, which Antarctica21 provides. November, December, and January, generally offer good snowshoeing opportunities. Snowshoes are usually not needed in February and March. Participants can select the excursions they want to join, paying a per-excursion fee. The activity can be booked and paid for on board the ship.

To take part in the Hiking & Snowshoeing program, you do not need previous experience. However, your level of physical fitness should be good. The minimum age for participation is 15 years.

For complete details, please review the "Hiking & Snowshoeing in Antarctica" guide, which is available upon request.

---

**\$85 USD per person, per excursion**  
**Book on board**

---

Note: The Hiking & Snowshoeing program is offered only in Antarctica.



# RESPONSIBLE TOURISM IN ANTARCTICA & THE SUB-ANTARCTIC REGIONS

*Antarctica21 is a small, independent, Chilean-owned, and managed company. When you travel with Antarctica21, you support specialized, small-scale tourism in Chile. Your travel investment with Antarctica21 creates local employment and directly benefits the country's developing economy.*

Our team is made up of specialized and passionate individuals who care deeply about Antarctica and the Southern Ocean. We handcraft each experience with love, working as a family and welcoming our expedition guests into that family.

Our team ensures that every Antarctica21 expedition is carried out in a sustainable, responsible way, according to the stringent requirements of the Antarctic Treaty and the rigorous guidelines of the International Association of Antarctica Tour Operators (IAATO), of which Antarctica21 is a full and active member.

Our Expedition Team will lead you on an inspiring and satisfying adventure while maintaining the integrity of each destination's unique environment and wildlife species.



## RESPONSIBLE TRAVELER GUIDELINES

- ♦ Never disturb or feed wildlife on land or at sea, allow wildlife to instigate all interactions.
- ♦ Don't take souvenirs (for example rocks, feathers, bones, etc.)
- ♦ Don't leave anything behind. Take home everything you brought with you.
- ♦ Never walk on moss and lichens. It takes years to grow back.
- ♦ When ashore, keep at least 5 meters (15 feet) distance from all animals.
- ♦ While kayaking, keep at least 100 meters (328 feet) distance from whales and seals.
- ♦ Avoid blocking the 'walkways' between penguin colonies and their water entry and exit points.
- ♦ Use the provided facilities to decontaminate your boots and help protect the ecosystem from foreign bacteria or seeds.
- ♦ There are no bathrooms available at landings in Antarctica. Make sure to use the facilities on board before excursions.



## RESPONSIBLE PHOTOGRAPHY GUIDELINES

Always respect animals when taking pictures. Your shot is important, but the wellbeing of wildlife must always take priority.

- ♦ Flash photography is not allowed; it might spook the animals.
- ♦ Read about Antarctic wildlife species and learn to read their behavior.
- ♦ If an animal appears distressed, stop taking photos and move away slowly and immediately.





# OUR COMMITMENT TO SUSTAINABILITY

*Antarctica21 is committed to leading sustainable travel in Antarctica, setting the highest standard in environmental protection, travelers' safety, and the promotion of science, education, and awareness about this unique ecosystem.*

Our vision for 2030 is to be recognized as an exemplary model of responsible travel in Antarctica and Sub-Antarctica, providing unique and unforgettable experiences that inspire people from around the world to value and preserve this last wild and unexplored corner of our planet. Through continuous innovation, collaboration with the scientific community, and respect for wildlife and ecosystems, we are committed to ensuring that future generations can enjoy and learn from this iconic region just as we do today.

## OUR ONGOING SUSTAINABILITY EFFORTS

Technological Innovation: Magellan Explorer and Magellan Discoverer are equipped with advanced technologies for the efficient use of resources, including a heat recovery system for the ship's heating and water supply, reducing waste and energy use. Additionally, Marorka's onboard software helps optimize the ship's fuel consumption and lower emissions by monitoring the use of engines and generators.

Carbon Offsetting: We purchase carbon credits in wind energy projects in Chile and Guatemala to offset emissions and support renewable energy production. Our certification process helps identify improvement areas, and while we currently offset emissions, our goal is to achieve net-zero emissions.

Environmental Protection: Being a member of the International Association of Antarctica Tour Operators (IAATO), and a CarbonNeutral® certified company, we prioritize every detail to minimize our impact on this delicate ecosystem. We have also

partnered with Deloitte to establish a comprehensive sustainability strategy based on the environmental, social, and governance (ESG) framework.

## ANTARCTICA21'S SUSTAINABILITY POLICY

At Antarctica21, we aim to foster a sustainable corporate culture focused on good governance and societal and environmental practices.

The policy includes:

- ◆ Sustainable Business & Excellence
- ◆ Social & Scientific Impact
- ◆ Environmental Responsibility

Learn more at  
[www.antarctica21.com/sustainability](http://www.antarctica21.com/sustainability)



## ANTARCTICA21 FOUNDATION

The Antarctica21 Foundation was established in 2021 as a vehicle for participation in a variety of programs focused on Antarctica. The foundation undertakes activities in support of science, art, conservation, and education, thereby contributing to the creation of Antarctic knowledge and to the transfer of that knowledge to wide segments of society.

## PROJECTS UNDER DEVELOPMENT

### Antarctic Time Tunnel

A physical space, in Punta Arenas, Chile, that presents the natural and cultural history of Antarctica.

### Onboard Science

A program that uses Antarctica21 ships as platforms for the collection of scientific data in Antarctica and support research in Chile and around the world.

### Green Energy

A pilot project to evaluate the possible use of green hydrogen as an energy source for Antarctic bases.

Discover more at [fundaciona21.com](http://fundaciona21.com)

On behalf of each Antarctica21 traveler, the company donates \$50 USD to support the foundation's projects.



# PLANNING YOUR TRIP



## ARRIVAL & DEPARTURE DETAILS

*Review the important details below about arrival and departure for your sea voyage, and make your travel plans accordingly. Ask your booking agent for assistance as needed.*

### PATAGONIA & CHILEAN FJORDS

The “Patagonia & Chilean Fjords” itinerary is operated southbound and northbound, depending on the departure date. Ensure that you are clear on the embarkation and disembarkation ports of your departure. The expedition starts at the pier as indicated in the itinerary. Boarding opens at 15:00 hrs (3 PM) and closes at 16:00 hrs (4 PM). On the last day of the expedition, disembarkation is planned for the morning as indicated in the itinerary, with the trip ending at the pier.

### FALKLANDS (MALVINAS) & SOUTH GEORGIA

For “The Falklands & South Georgia” itinerary, on Day 1 in Punta Arenas, from 10:00 hrs (10 AM), make your way to Explorers House and enjoy the facilities. At 14:30 hrs (2:30 PM), a transfer to the ship will be provided. Upon arrival at Punta Arenas, on the last day of the expedition, we disembark and take a group transfer to the town’s center where the expedition will end. Explorers House remains available to you for the day.

### FALKLANDS (MALVINAS), SOUTH GEORGIA & ANTARCTICA

For the “Falklands (Malvinas), South Georgia & Antarctica” itinerary, on Day 1 in Punta Arenas, from 10:00 hrs (10 AM), make your way to Explorers House and enjoy the facilities. At 14:30 hrs (2:30 PM), a transfer to the ship will be provided. On the last day of the expedition, disembarkation in Ushuaia is planned in the morning. However, delays are possible. Antarctica21 strongly suggests that any travel plans made for the last day of the expedition begin in the late afternoon.

### ANTARCTIC SMALL SHIP EXPEDITION

The “Antarctic Small Ship Expedition” itinerary starts at the pier in Ushuaia, and boarding is between 15:00 hrs (3 PM) and 16:00 hrs (4 PM). At 16:00 hrs (4 PM), boarding will close. On the last day of the expedition, disembarkation in Ushuaia is planned in the morning. However, delays are possible. Antarctica21 strongly suggests that any travel plans made for the last day of the expedition begin in the late afternoon.

### TRAVELING TO AND FROM YOUR ANTARCTIC GATEWAY

Flights between Ushuaia and Buenos Aires’ Ezeiza International Airport and Aeroparque Domestic Airport are available daily on a few airlines. Buenos Aires can easily be accessed with many international flights that land daily at Ezeiza International Airport. Many international airlines land daily at Santiago’s Arturo Merino Benítez International Airport. Several airlines offer daily service between Santiago and Punta Arenas.

Overland transportation between Ushuaia and Punta Arenas, a 12-hour journey, is also available.



# HOTEL & TRANSFER PACKAGE

For sea voyages that start and end in Punta Arenas, we offer a convenient Hotel & Transfer Package. The package is available pre-expedition and post-expedition and includes:

- ♦ Dedicated group airport transfers
- ♦ 1-night hotel accommodation
- ♦ Breakfast
- ♦ Access to Explorers House

---

**Please inquire at time of reservation**

---

## CANCELLATION CONDITIONS

In the case of cancellation 120 days or more prior to departure, Antarctica21 will refund 50% of the amount paid. In the case of cancellation 119 days or less prior to departure, there will be no refund.

Please note that Antarctica21 only offers airport transfers as part of its packages.





# PACKING FOR YOUR TRIP

## SUGGESTED CLOTHING

The average temperature in the Falkland Islands (Islas Malvinas) during the time of our visit is typically in the 5–10 °C (40–50 °F) range. In Patagonia, guests can expect temperatures between 4 and 10 °C (39–50 °F). In South Georgia and the Antarctic Peninsula, the average temperature is around 0 °C (32 °F), although it can often feel colder due to the wind chill factor. For this reason, it is best to wear several layers of light, warm clothing. The suggested clothing for Antarctica and the sub-Antarctic regions is very similar to that recommended for skiing: thermal underwear, a couple of warm and wicking mid-layers, a windproof and waterproof jacket, plus pants as the outer layer. You will also need a hat, a scarf, waterproof and insulated gloves, and sunglasses with high UV protection. The pre-departure material provides further details. We also suggest packing comfortable clothes to wear on board, as well as rubber-soled shoes for walking around on the outside decks.



## EXPEDITION JACKET

Our signature waterproof expedition jacket has been hand-selected for you as the perfect, technical outer shell for use on our expedition cruises.

Crafted for offshore and coastal sailing, the Skagen Offshore Jacket is designed with input from professional sail racers for ultimate performance. It features HELLY TECH® Performance technology for weather protection, Cordura fabric for durability, and adjustable elements for a customized fit. Additional features include a neon yellow hood, fleece-lined collar, SOLAS reflective elements, and ocean-bound recycled materials sourced from regions vulnerable to plastic pollution.

- ◆ Only available in the Antarctica21 Gear Shop at [www.antarctica21.com/gearshop](http://www.antarctica21.com/gearshop)
- ◆ Note: Jacket model is subject to change. Please review model and price at the time of purchase.

# USEFUL TIPS

## WATERPROOF BOOTS & CLOTHING

As most landings in Antarctica and the sub-Antarctic regions are “wet landings,” the best footwear is knee-high waterproof boots. You will not need to carry them with you since Antarctica21 will provide you with a pair of thermal rubber boots.

Make sure you pack waterproof outer layers to keep dry during Zodiac excursions and landings.

## FACE PROTECTION

Good quality UV filtering sunglasses are essential. Glacier glasses have leather flaps at the sides to stop the light from passing through. Due to the high reflectance of UV radiation, you will also need good sunblock lotion for your face (protection factor 30 and above) and lip balm.

## PHOTOGRAPHY

To see the wildlife, you should have a good pair of lightweight binoculars (the suggested magnification is 7× or 8×). If you are passionate about photography, do not forget a good zoom lens to shoot wildlife while avoiding close approaches. Also, take a good supply of memory cards and spare batteries with you since cold temperatures can reduce their life span. The recreational use of drones is not allowed during the expedition.

## VISA REQUIREMENTS

It is the traveler’s responsibility to check the entry requirements of the countries visited during their trip, based on their nationality. For trips that visit Argentina, Chile, and the UK, the requirements of these countries should be considered. Please note that if you require a visa, it must be a multiple-entry visa to ensure compliance with travel requirements.

## DIETARY INFORMATION

Requests regarding diets must be made on the Participation Form you receive after your booking confirmation. This information will be passed along to our staff so they can accommodate your needs while on your voyage.

## ANTARCTICA21 ONBOARD APP

Designed to enhance your Antarctica21 expedition from beginning to end with exclusive content and features for guests on board Magellan Discoverer and Magellan Explorer. It is your travel companion with a wealth of information, live updates, and educational content tailored to make your journey as enriching and comfortable as possible.



## IMPORTANT PRE-TRAVEL REMINDERS

- ◆ Submit your participation form 90 days prior to your trip
- ◆ Book flights according to the required arrival and departure times, and allow for buffer time on arrival and departure days in case of delays
- ◆ Purchase travel insurance, including medical evacuation coverage
- ◆ Review our Travel Tips on [antarctica21.com/travel-tips-antarctica](https://antarctica21.com/travel-tips-antarctica)
- ◆ Review the clothing and gear recommendations
- ◆ Check the validity of your passport and obtain any required entry visas





# IMPORTANT TRIP DETAILS

## THE NATURE OF EXPEDITION TRAVEL

Our expeditions are suitable for adventurous travelers who enjoy full mobility and reasonably good health. Expedition travel to Antarctica and the sub-Antarctic regions requires flexibility and adaptation to ever-changing circumstances.

## EXPEDITION LANGUAGE

The official language of our expeditions is English. The voyage will take travelers to remote destinations where interaction with our polar guides is essential. In the interest of safety and for the enjoyment of the experience, we strongly recommend that travelers who do not understand English be accompanied by someone who does, such as a friend, a family member, or a Tour Leader.

## YOUR TRAVEL COMPANIONS

Antarctica21 offers its expeditions worldwide. Each year, we welcome travelers from over 40 different countries. They may travel alone, as a family, or as part of a group. While some of your traveling companions may speak different languages and have different customs, they will share your passion for adventure and interest in the natural world.

## PARTICIPATION FORM

Participants are required to fill out and sign an online Participation Form and return it to Antarctica21 at least 90 days prior to departure.

## MEDICAL INSURANCE

It is mandatory that participants to be adequately covered by a travel insurance policy that covers aero-medical evacuation from any of the destinations included in your selected itinerary in the case of a medical emergency during the trips, including emergencies related to pre-existing health conditions.

## CANCELLATION INSURANCE

Antarctica21 strongly urges participants to be adequately covered by trip cancellation and interruption insurance.

## ITINERARY

Every effort will be made to adhere to the planned program. However, with this type of adventurous travel, changes to the itinerary may occur due to severe and changeable weather. We need to emphasize the fact that weather conditions are unpredictable, and safety is always the paramount concern on any Antarctic voyage. For this reason, Antarctica21 reserves the right to change the itinerary described due to weather conditions or other factors beyond Antarctica21's control without consulting the participants.

## BAGGAGE

We recommend that clients avoid expensive designer luggage that is easily damaged. We also strongly recommend that clients take out a luggage insurance policy that covers the cost of repairs or replacement in case their luggage is damaged. Due to the nature of the expedition, and as stated in our Terms and Conditions of Sale, Antarctica21 cannot be responsible for any damage to a customer's luggage.

Note that at certain points during the expedition, you will be required to handle your own luggage.

---

## Terms & Conditions

For a complete list of Terms and Conditions visit [www.antarctica21.com/termsconditions](http://www.antarctica21.com/termsconditions)



# Antarctica21

Fly & Sail Expeditions



[www.ssstravel.de](http://www.ssstravel.de)  
Trogerstr. 40 81675 München  
Tel.089/472820 [info@ssstravel.de](mailto:info@ssstravel.de)

## Headquarters

Seno Lautas/n, Puerto Williams,  
Isla Navarino, Chile

## Administration and Operations

O'Higgins 1170,  
Punta Arenas, Chile

## Sales

Pedro de Valdivia Norte 0129,  
Office 202, Providencia,  
Santiago, Chile

## Reservations and Customer Service

+56 2 2231 8142

## Toll-Free USA and Canada

+1 (877) 994-2994

## E-mail

[sales@antarctica21.com](mailto:sales@antarctica21.com)

[www.antarctica21.com](http://www.antarctica21.com)



Scan this code for  
a digital version of  
this brochure.



SERANDIPANS  
Afloat Partner



[CarbonNeutral.com](http://CarbonNeutral.com)