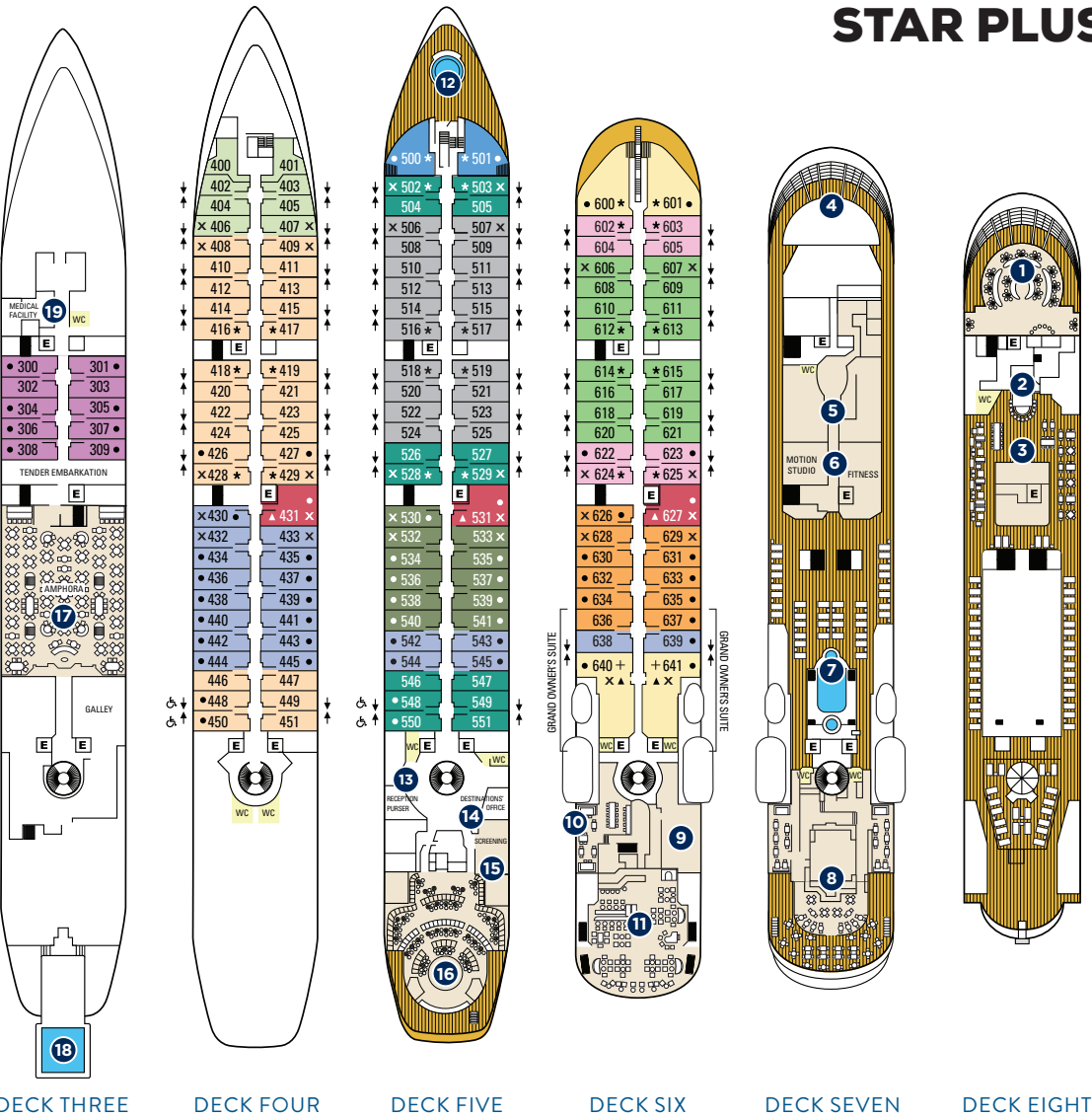


STAR PRIDE, STAR BREEZE, STAR LEGEND

TRANSFORMED BY THE \$250 MILLION STAR PLUS INITIATIVE

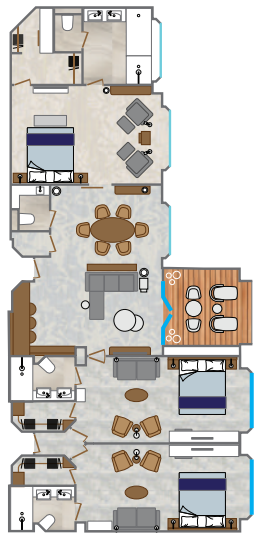


STAR BREEZE
voyages starting
March, 2021

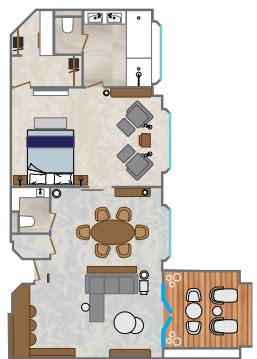
STAR LEGEND
voyages starting
April, 2021

STAR PRIDE
voyages starting
July, 2021

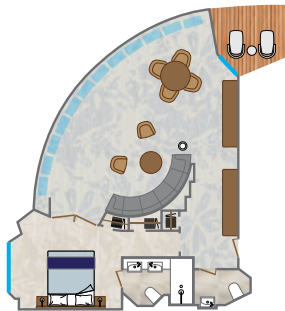
- + RESTRICTED VIEW
 - ADJOINING SUITES
 - E ELEVATOR
 - * INCLUDES BATHTUB
 - ▲ SEPARATE BATHTUB & SHOWER
 - ONE QUEEN SIZE BED ONLY (no twin option)
 - x 3RD BERTH AVAILABLE
 - ◊ MODIFIED ACCESSIBLE SUITES
- Feature a full-size bed (no twin option) Suites 448, 450, 548, & 550 are modified accessible, shower only with a small lip into shower, only one sink, a step into the bathroom with a portable ramp, standard interior and exterior doorways.



GRAND OWNER'S SUITE



OWNER'S SUITE, MIDSHIP



OWNER'S SUITE, FORWARD*

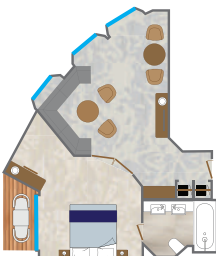
*Star Pride Owner's Suites are slightly different layout with shower only.

ALL-SUITE SHIPS

Grand Owner's Suites:
3 Bedroom Suites, 640/638/636 or 641/639/637: 1,374 square feet (128 square meters)

Can also be booked as 2 Bedroom Suites, 640/638 or 641/639: 1,097 square feet (102 square meters)

Owner's Suites Midship, 640 and 641 (OW): 820 square feet (76 square meters), both with 3rd berths



CLASSIC SUITE



DELUXE SUITE



STAR BALCONY SUITE



BALCONY SUITE



STAR OCEAN VIEW SUITE



OCEAN VIEW SUITE



STAR PORTHOLE SUITE

Star Balcony Suites with 3rd berths — 530, 532, 533, 626, 628, 629

Balcony Suites (BS, BS1): 277 square feet (26 square meters)

Balcony Suites with 3rd berths — 506, 507, 606, 607

Star Ocean View Suites (SS1): 277 square feet (26 square meters)

Star Ocean View Suites with 3rd berths — 430, 432, 433

Ocean View Suites (S, S1, S2, S3): 277 square feet (26 square meters)

Ocean View Suites with 3rd berths — 406, 407, 408, 409, 428, 429, 502, 503, 528, 529, 624, 625

Star Porthole Suites (SP): 277 square feet (26 square meters)

All beds convertible to twin beds unless otherwise indicated.

ONBOARD SPACES

- | | | |
|----------------------------------|-------------------------------|-------------------------|
| 1 Yacht Club Café & Library | 7 Pool and whirlpool | 14 Destination Office |
| 2 Star Bar | 8 Veranda/Candles | 15 Screening Room |
| 3 Star Grill by Steven Raichlen | 9 Star Boutique | 16 Lounge |
| 4 Bridge | 10 Cuadro 44 by Anthony Sasso | 17 Amphora Restaurant |
| 5 World Spa by Windstar | 11 Compass Rose | 18 Watersports Platform |
| 6 Fitness Center & Motion Studio | 12 Whirlpool | 19 Medical Facility |
| | 13 Reception | E Elevator |
| | | WC Public Restroom |

- Owner's Suite (OW)
- Classic Suite (CS)
- Deluxe Suite (DS)
- Star Balcony Suite (SBS1)
- Balcony Suite (BS1)
- Star Balcony Suite (SBS)
- Balcony Suite (BS)
- Ocean View Suite (S3)
- Ocean View Suite (S2)
- Star Ocean View Suite (SS1)
- Ocean View Suite (S1)
- Ocean View Suite (S)
- Star Porthole Suite (SP)

SHIP FACTS

GUEST CAPACITY: 312
GUEST DECKS: 6
CREW MEMBERS: 200
LENGTH: 522 feet (159 meters)
BEAM: 62 feet (19 meters)
DRAFT: 17.7 feet (5.4 meters)
CRUISING SPEED: 15 knots

PROPULSION: Twin propeller, driven by two Wartsila diesel engines
TONNAGE: 12,995 gross registered tons (grt)
SHIP'S REGISTRY: Bahamas



Veranda

- Access to board ship is via stairs only.
- Access to/from outside deck may require assistance with doors and thresholds.