



SEABOURN®

Ultra-Luxury Cruises & Expeditions



## THE SEABOURN ALL-INCLUSIVE EXPEDITION DIFFERENCE

- Ultra-luxury purpose-built expedition ships
- All ocean-front suites luxuriously appointed
- Intuitive, personalized service
- World-class 23-person Expedition Team
- Inclusive Experiences at every stop
- Optional, guided Expedition Experiences\*
- Nearly 30,000 square feet of spacious open deck space
- 4K GSS Cineflex camera
- Complimentary Signature Events
- Open bridge\*\*
- Handcrafted itineraries
- Daily enrichment programs throughout the ship
- Complimentary Wi-Fi packages with unlimited minutes
- Welcome Champagne and complimentary in-suite bar
- World-class dining venues are all complimentary
- Tipping is neither required, nor expected
- Complimentary premium spirits and fine wines
- Intimate ships with a private, yacht-like atmosphere
- Committed to environmental stewardship and sustainability

\* *Optional program, for additional charge*

\*\* *At the Captain's discretion*

## CONTENTS



2

### THE SEABOURN EXPEDITION EXPERIENCE

Enjoy once-in-a-lifetime voyages with expert guides and all the luxuries you love on board.



12

### SOUTH AMERICA

From Brazil's golden shores to Patagonia's endless expanses, explore a continent of striking contrasts.





16

## ANTARCTICA

Delve into the icy worlds of Antarctica, the Falkland Islands, and South Georgia, where playful penguins and sparkling glaciers await.



22

## SOUTH PACIFIC

Journey to secluded isles where ancient traditions endure and coral reefs burst with vibrant color.



28

## THE KIMBERLEY

Discover wild coastlines, sculpted sandstone gorges, and one of the world's oldest living cultures.



32

## THE ARCTIC & NORTHERN EUROPE

Navigate icy waters flanked by rugged peaks in the Arctic or marvel at the puffin-covered cliffs of Iceland and Scotland.

**On the cover:** Step ashore on South Georgia's Salisbury Plain, where tens of thousands of king penguins crowd the beach alongside lounging elephant seals and fur seals. A Zodiac® landing brings you face-to-face with one of the most breathtaking wildlife spectacles on Earth.

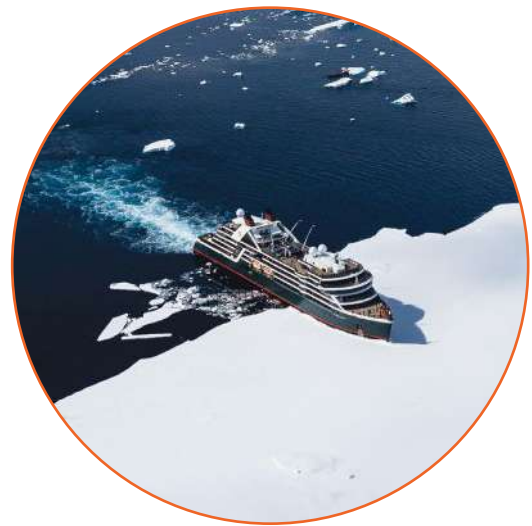


# WHY SEABOURN EXPEDITIONS



## A WORLD-CLASS EXPEDITION TEAM

Each ship has a world-class Expedition Team of up to 23 academics, scientists, and general naturalists who share your passion for exploring and learning about some of the world's remote regions. Through off-ship expeditions and onboard discussions, they'll help you see your destination through new eyes, answering your questions and awakening your curiosity.



## EQUIPPED FOR EXPLORATION

Our expedition ships are purpose-built to explore the off-the-beaten-path, unspoiled regions of the world, with features that enhance your destination experience. These range from an ice-strengthened hull for in-depth polar exploration to a mast-mounted 4K video camera and luxurious touches like cozy fireplaces and infinity pools.





### DESIGNED FOR DISCOVERY

Days are filled with wonder as you arrive in places where nature rules and you can join your Expedition Team on included expeditions and optional excursions. Explore a magical tundra ecosystem on a nature hike, take a kayak or Zodiac® to the face of a glacier, or snorkel over a pristine reef.



### UNMATCHED ADVENTURE, UNPARALLELED LUXURY

With a guest list barely topping 250, your ship has an exclusive yacht-like atmosphere, one reserved for adventurers like you who believe new horizons are best explored in comfort and style. Fascinating strangers quickly become friends as you bond over shared experiences and common interests.



# ENGINEERED FOR EXPEDITIONS

*Seabourn Venture and Seabourn Pursuit are designed and purpose-built specifically for exploring in unprecedented elegance and ease in the most coveted and unspoiled destinations on Earth. Get set for an ultra-luxury expedition experience like no other.*



**SPA & WELLNESS**



**SEABOURN  
SQUARE**

**8 LOUNGES  
& BARS**

**8 DINING  
EXPERIENCES**

**8 DOUBLE  
SEA KAYAKS**

**2 CUSTOM-BUILT  
EXPEDITION  
SUBMARINES**

**INFINITY POOL**



**EXPEDITION LOUNGE**





## LANDING ZONE

Where guests prepare for and return from off-ship expedition activities.

- Generous size for comfort and access to and from Zodiacs, with room for boot storage
- Guests move in small groups from the Expedition Lounge to one of two Landing Zones to maximize their time ashore

## 132 ALL VERANDA, ALL OCEAN-FRONT SUITES

**THREE BOW THRUSTERS**  
enabling nimble maneuverability

**24 ZODIAC®  
BOATS**

**SHELL DOORS**  
are flush-mounted  
near the waterline,  
making for quick and  
easy, one-step  
boarding

**OPEN BRIDGE,\***  
hosted by members of the  
Expedition Team, providing  
firsthand access to the ship's  
command center and officers  
navigating your journey

**PC6 ICE-STRENGTHENED HULL**  
taking you further to bring you  
**closer**, into polar regions, ice-  
filled fjords, and more remote areas,  
including the heart of the Northwest  
Passage and exotic destinations  
around the world



**DISCOVERY CENTER**

*\*At the Captain's discretion*





## DELIGHT IN THE DETAILS

*From the moment you step aboard you'll be part of an exclusive circle, the privileged few who have experienced the joys of ultra-luxury discovery. Sit back, relax, and let Seabourn's rigorous standards of quality and excellence wrap you in comfort.*

### SPACIOUS SUITES

Your spacious suite greets you with a welcome cocktail and a fully stocked bar with your preferences. Thoughtfully designed for adventurers, each suite features a personal heated wardrobe for expedition gear, tastefully curated fine furnishings, and private verandas for relaxing, wildlife and landscape viewing, or entertaining. And whatever else you need — laundry service, more ice, an extra turndown chocolate — your Personal Suite Attendant will be happy to oblige.

### PENTHOUSE AND PREMIUM SUITES

For even more luxurious space and amenities, our Expedition ships have a limited number of Owner's, Signature, and Wintergarden suites, offering extended dining areas, guest baths, and wet bars, as well as additional amenities and special features — such as our extraordinary two-story Wintergarden Suites, or the private canopied whirlpool spas in Signature Suite verandas.





## PERSONALIZED SERVICE

Thanks to a high onboard team-to-guest ratio, our professionally trained crew members not only know your name, but your personal preferences as well. Whether they surprise you with your favorite red velvet birthday cake at dinner, or quickly repair that torn lining in your jacket, you'll find them incredibly sincere, attentive, and thoughtful.

## WORLD-CLASS DINING

Our skilled culinary team will astound you with their ability to produce fresh, delicious, and memorable cuisine even as we sail in some of the world's most remote destinations. Kiwi parfait off Greenland? Trout Almondine in Polynesia? Their kitchen wizardry knows no bounds. And there's no shortage of choices, with eight tempting dining experiences plus our 24-hour in-suite dining.



# EXPERIENCES LIKE NO OTHER

Join your Expedition Team on inclusive experiences, such as nature walks, hikes, Zodiac® cruising, cultural tours, and other shore excursions. Venture deeper on optional submarine and kayak expeditions. Or capture lifelong memories as you sharpen your photography skills with our new Image Masters program.







## Included Expeditions

### 1: ZODIAC CRUISES & LANDINGS

Land on trackless shores, watch for shimmering icebergs, and navigate towering fjords.

### 2: HIKES & NATURE WALKS

Follow your Expedition Team to Neolithic ruins, penguin colonies, and spectacular views.

### 3: LECTURES, DAILY RECAPS & BRIEFINGS

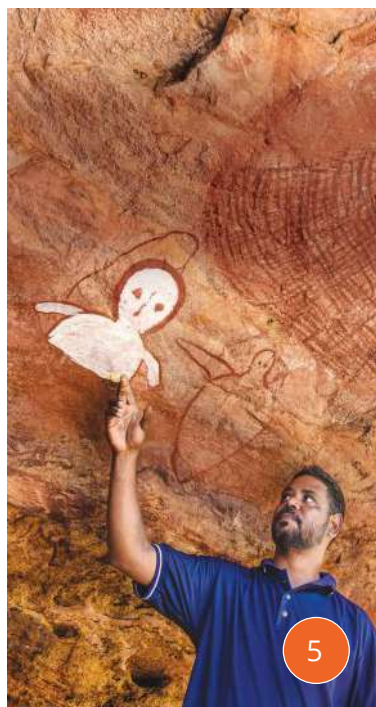
Learn from your Expedition Team through formal *Seabourn Conversations*®, Fireside Chats, and impromptu discussions.

### 4: SNORKELING

Open your eyes to the colorful underwater world as you dive into waters teeming with marine life.

### 5: CULTURAL EXPERIENCES

Explore remote villages, historic sites, and the art and artifacts of ancient cultures.



## Optional Expeditions & Programs

### 6: IMAGE MASTERS \$

Join a small group of guests for our new photography masterclass during four days of your voyage. This optional workshop provides in-depth, in-the-field instruction from an accomplished nature photographer.

### 7: SUBMARINES \$

Plunge beneath the surface in custom-built submarines with licensed pilots.

### 8: KAYAKS \$

Silently approach curious wildlife and hear the subtle sounds of snapping ice and lilting birdsong.

\$ Available for an additional charge in select destinations.



The  
Northwest Passage  
Experience

Anchorage

Gulf of  
Alaska

Pacific  
Ocean

Papeete

Lautoka

Coral  
Sea

Darwin

Broome

Pacific  
Ocean

A WORLD OF SEABOURN EXPEDITIONS





# HIGHLIGHTS OF South America

## Brazil's Beachside Cities

Vacation like Rio's *Cariocas* at picturesque coastal towns brimming with colonial streets, stunning beaches, and lively Afro-Brazilian culture.



## Chilean Fjords

Sail this incredible maze of fjords with stunning views of lush green Patagonian rainforest and South America's most scenic glaciers.

## Argentine Patagonia

Explore the remote village of Bahía Bustamante, known as the "Argentine Galápagos," and observe killer whales, penguins, and southern elephant seals outside Puerto Madryn.



March–November 2026  
15- to 37-day sailings

## Pío XI Glacier

Join your Expedition Team for a Zodiac® cruise into the ice field, watching and listening for the thunderous crash of calving icebergs.



## Caleta Tortel

Wander the wooden boardwalks and stairways that wind along the milky-blue Tortel bay, while your guide recounts tales of this isolated town's past.



“

It was a great voyage, fun and educational. I'm in love with the entire Expedition Team.”

— Millie R. 



# 16-DAY TRINIDAD TO RIO: SOUTH AMERICAN EXPEDITION



BARBADOS TO RIO DE JANEIRO | OCT 13, 2026 | SEABOURN VENTURE

## DAY 0: BARBADOS

Begin your voyage in **Barbados**, an elegant country that proudly displays its 400 years of British heritage. Meander past colonial landmarks in Bridgetown, a UNESCO World Heritage Site, sample some of the island's famous rum, or stroll Queen's Park with its thousand-year-old baobab tree.

## DAY 1: PORT-OF-SPAIN

Set off from **Port-of-Spain** to board a local boat for a sunset cruise to see Trinidad & Tobago's national bird, the striking scarlet ibis. As you navigate the inlets and channels, keep your gaze upward to witness the birds returning to roost for the evening, painting the sky with vivid hues. Or spend the day sampling the aged rums and famous bitters of the Angostura distillery.

## DAYS 2-4: AT SEA & DEVIL'S ISLAND

Enjoy two leisurely days at sea before joining your Expedition Team to explore **Devil's Island**, once the home of the notorious Cayenne penal colony. Wander the ruins to see white and brown capuchin monkeys swinging through abandoned cells and jungle foliage slowly overtaking the old prison.

## DAYS 5-7: AT SEA & CROSSING THE EQUATOR

Join the officers on the Bridge for a look at the ship's navigation systems, watch for migratory birds from your spacious veranda, lounge by the pool, and attend *Seabourn Conversations*® about the cultures and ecosystems along your route as you cross the equator and reach the shores of Brazil.

## DAY 8: FORTALEZA

Join a walking tour in **Fortaleza** to discover its diversity, beauty, and history. Visit landmarks like the Metropolitan Cathedral and José de Alencar Theater, a memorial to the famous writer. Linger in the lively town center or enjoy a drive along a palm-fringed beach and through Aldeota, a sophisticated residential area.



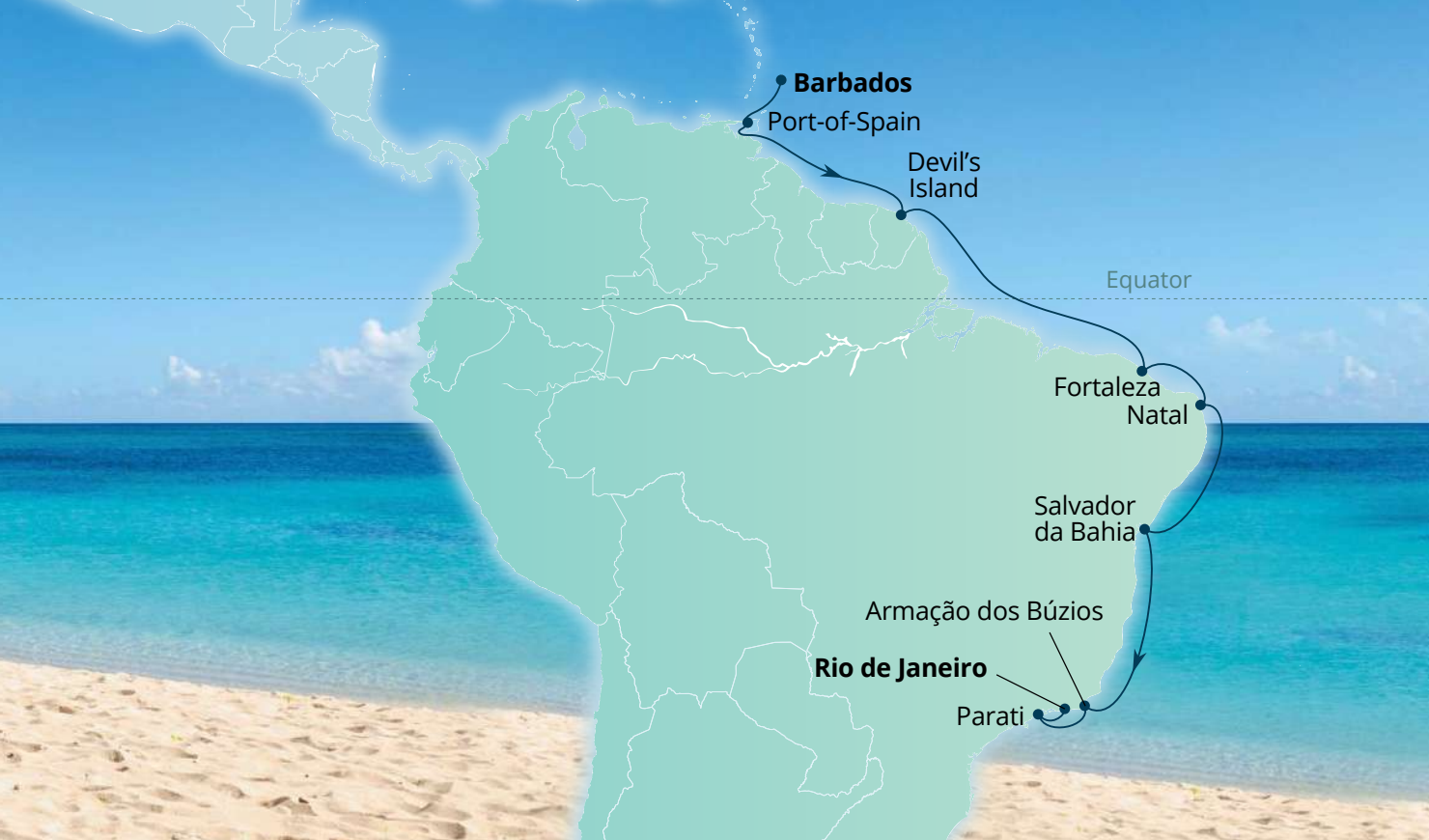
## DAYS 9-10: NATAL & AT SEA

Get acquainted with **Natal's** rich history as you walk through Ribeira, the oldest part of town. Then, venture to nearby Pirangi Beach to see the largest cashew tree in the world. Help yourself to a few of the thousands of cashews before visiting the 16th-century Fort Reis Magos, built to defend against French pirates and later the Dutch. Or, if you're feeling adventurous, embark on an optional dune buggy expedition. The thrilling ride takes you up towering sand dunes to panoramic sea views. Cool down afterwards with a swim in Pitangui Lagoon.

## DAYS 11-13: SALVADOR DA BAHIA & AT SEA

Meander the cobblestone streets of Pelourinho, **Salvador's** historic center and a UNESCO World Heritage Site. This vibrant neighborhood showcases





pastel-colored colonial homes, charming squares, ornate churches, and the city's unique Afro-Brazilian culture. Back on board, spend some time in the Constellation Lounge with its floor-to-ceiling glass walls and delectable cocktail-time tapas.

#### DAY 14: ARMAÇÃO DOS BÚZIOS

Once a sleepy fishing village, **Búzios** blossomed after Brigitte Bardot's famed visit yet still feels authentically Brazilian. Join a scenic Zodiac® ride along the coastline to Ilha Branca to search for nesting brown boobies and Dominican gulls. Or sail by schooner past twelve beaches, with swimming stops in the crystal-clear waters off Feia Island and Tartaruga.

#### DAY 15: PARATI

Choose from two included expeditions in this alluring seaside city. Discover colonial gems and watch artisans at work in one of the best-preserved Portuguese old towns in Brazil. Or beach-hop by schooner surrounded by emerald waters and dense rainforest.

#### DAY 16: RIO DE JANEIRO

End your trip in the sparkling city of **Rio de Janeiro**. A cable car ride up Sugarloaf Mountain, the statue of Christ the Redeemer on Corcovado, signature beaches, and more await.



### MORE PATHS TO ADVENTURE

Itinerary, Ship & Departure Date(s)	From/To Port	Dates
<b>15-DAY WILD SOUTH ATLANTIC &amp; FALKLAND ISLANDS</b> Seabourn Venture	Buenos Aires to Rio de Janeiro	MAR 20, 2026
<b>18-DAY CHILEAN FJORDS &amp; ANTARCTICA</b> Seabourn Pursuit	San Antonio (Santiago) to Buenos Aires	NOV 4, 2026
<b>21-DAY WILD SOUTH ATLANTIC &amp; ANTARCTIC PENINSULA</b> Seabourn Venture	Rio de Janeiro to Buenos Aires	OCT 29, 2026

LEGEND:



IMAGE MASTERS



ZODIAC



KAYAKING



# HIGHLIGHTS OF Antarctica

## Kayaking

To admire Antarctica from sea level is a true delight. Join your Expedition Team and paddle past graceful humpback whales and shimmering glaciers that calve into the sea.



## Zodiac Cruises & Landings

Traverse iceberg-dotted waters by Zodiac® and be one of the few to set foot on the White Continent during landings ashore.

## Penguins

Learn to recognize a wide variety of penguin species from the king penguins of South Georgia to Adélie, chinstrap, and gentoo penguins in Antarctica.



January–December 2026

January–March 2027

11- to 38-day sailings


## Submarine Expeditions

Dive into underwater realms on an optional submarine exploration. Watch for the keystone species — krill — as well as crustaceans, scallops, and brittle stars.



“

If there is only one thing  
you do in life...do this trip.”

— Sophie A. 



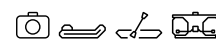
## Sail Longer, See More

Embark on 13- to 37-day voyages to venture deeper into Antarctic seas, spot Commerson's dolphins off the shores of the Falkland Islands, or soak up the sun in Brazil.





## 11-DAY THE GREAT WHITE CONTINENT



ROUND-TRIP BUENOS AIRES | JAN 5, 7, 15, 17, FEB 6, 8, 16, 28, MAR 10, DEC 8, 11, 18, 28, 2026  
JAN 19, 22, FEB 1, 11, 20, 21, MAR 3, 13, 2027 | SEABOURN VENTURE & SEABOURN PURSUIT

### DAYS 0-1: BUENOS AIRES

**Buenos Aires** has a rich European heritage, vibrant cultural scene, and some of the most outstanding architecture in the world. Enjoy an overnight in the city with an **included airport transfer and hotel stay**.

### DAY 1: USHUAIA



Transfer to the airport for your **included flight to Ushuaia**. Nestled in a bowl of snowcapped mountains on the banks of the Beagle Channel, Ushuaia greets you



with a tapestry of colorful houses scattered against a rim of dramatic jagged peaks. It is often referred to as *El Fin del Mundo*, the “end of the world,” and it is the de facto gateway to Antarctica, where you will embark

your ship for your expedition to the Great White Continent.

### DAYS 2-3: DRAKE PASSAGE

Your Antarctic voyage truly begins as you cross the **Drake Passage**, the strait separating South America from Antarctica. These waters are rich in plankton and krill, attracting a wide variety of marine life. Your Expedition Team will point out the noticeable change to Antarctic waters and identify ever-present petrels on the waves, albatrosses gliding just above the sea, and the exciting appearance of any whales or dolphins.

### DAYS 4-8: THE ANTARCTIC EXPERIENCE

Get closer to **Antarctica**, cruising alongside towering icebergs by Zodiac® or kayaking through a maze of sea ice. Observe wildlife including massive penguin colonies, and go ashore to walk and hike across vast, untouched



landscapes seldom seen by other travelers. Our days are flexible and dictated by nature — stopping to watch a playful pod of killer whales, a calving glacier, or whatever the moment provides. Our ships are equipped to navigate the glittering ice and take you ashore for unforgettable wildlife encounters led by experienced guides who reveal the secrets of the Great White Continent.

*Here are a few of the incredible experiences we have been able to offer in past seasons:*

**Lemaire Channel:** One of Antarctica's most stunning passages. Just seven miles long, it will astound you with mirror-like waters, magnificent glaciers, and dramatic icebergs sculpted by sea and wind.

**Pleneau Island:** Pleneau Bay is where icebergs that break off the continent pile up in a spectacular traffic jam known as the iceberg graveyard. But that's not the only attraction. The island is also home to gentoo and chinstrap penguin colonies, giving guests the opportunity to watch the bustling activity from afar.

**Neko Harbour:** This small cove echoes with the constant crackling of the sea ice and distant thunder of icebergs tumbling into the sea. The continental landing is an ideal site for whale watching and spotting speedy gentoo penguins porpoising through the water.





## DAYS 9–10: DRAKE PASSAGE

Relax on another crossing of the **Drake Passage**. Share tales of your explorations with your shipmates, take in sweeping views from the whirlpool or sauna, and savor a sophisticated menu celebrating global flavors on an Earth & Ocean night in The Colonnade.

## DAY 11: USHUAIA & BUENOS AIRES



Monte Olivia towers above **Ushuaia**, Argentina, as you approach from the Beagle Channel. You have returned to one of the southernmost cities on Earth and re-entered civilization. Today you will disembark and transfer to the airport for your **included return flight to Buenos Aires**, but you'll cherish your unforgettable memories of Antarctica for the rest of your life.



## MORE PATHS TO ADVENTURE

Itinerary & Ship	From/To Port	Departure Date(s)
<b>13-DAY ANTARCTICA EXPLORATION</b> Seabourn Venture & Seabourn Pursuit	Round-trip Buenos Aires	JAN 25, 27, 2026 JAN 7, 10, 29, 2027
<b>37-DAY FROM THE CARIBBEAN TO THE ANTARCTIC</b> Seabourn Venture	Barbados to Buenos Aires	OCT 13, 2026

### LEGEND:



IMAGE MASTERS



ZODIAC



KAYAKING



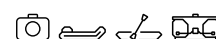
SUBMARINES

CONTACT YOUR TRAVEL ADVISOR, CALL SEABOURN AT 1.888.873.2675, OR VISIT SEABOURN.COM





## 21-DAY ANTARCTICA, SOUTH GEORGIA & FALKLAND ISLANDS



ROUND-TRIP BUENOS AIRES | FEB 26, NOV 18, 21, DEC 21, 2026  
MAR 2, 2027 | SEABOURN PURSUIT & SEABOURN VENTURE

\*Ports or port order may vary.



### DAYS 0-1: BUENOS AIRES

Arrive in Argentina's handsome capital and transfer to your **included stay at a boutique hotel**. Dine on grass-fed steaks at a local *parrilla* and take in a passionate tango performance to make the most of your time in the city before beginning your expedition.

### DAYS 1-3: USHUAIA & THE DRAKE PASSAGE



Board your **included flight** to the "end of the world," a nickname for **Ushuaia**, known as the southernmost city on earth. Thanks to its relative proximity, Ushuaia is the gateway to the Great White Continent. Anticipation builds as we cross the Drake Passage. Settle in and get to know the ship. You'll be fitted for your Helly Hansen expedition parka, yours to keep, and attend engaging *Seabourn Conversations®* on Antarctica's natural wonders and wildlife. Speaking of which, our chances for

spotting wildlife in **Drake Passage** are high, whether it be Wilson's storm-petrels, soaring albatrosses, or occasional appearances by whales and dolphins. In the evening, enjoy entertainment in The Club as you get to know your fellow adventurers.

### DAYS 4-9: THE ANTARCTIC EXPERIENCE

**Antarctica's** pristine natural landscapes are second to none. Spend six days awed by icebergs and glaciers, rocky peaks and seabird-covered cliffs, immense penguin rookeries, and wildlife from humpback, minke, and killer whales to crabeater and leopard seals. Each day we'll answer the call of the wild and let Mother Nature guide our journey. Monitoring weather and sea conditions, your Expedition Team will identify the best locations to explore by Zodiac® cruises and landings, kayak, or submarine — each giving you a front-row seat to fully savor Antarctica's singular beauty.

The experiences evolve with the season. In November, navigate through dramatic snowy scenery with the potential for landings on the abundant sea ice. Late December brings longer days and ideal weather as penguin chicks start to hatch at nesting sites. And whale activity peaks from mid-February to early March, while penguin chicks waddle across snow-free beaches.



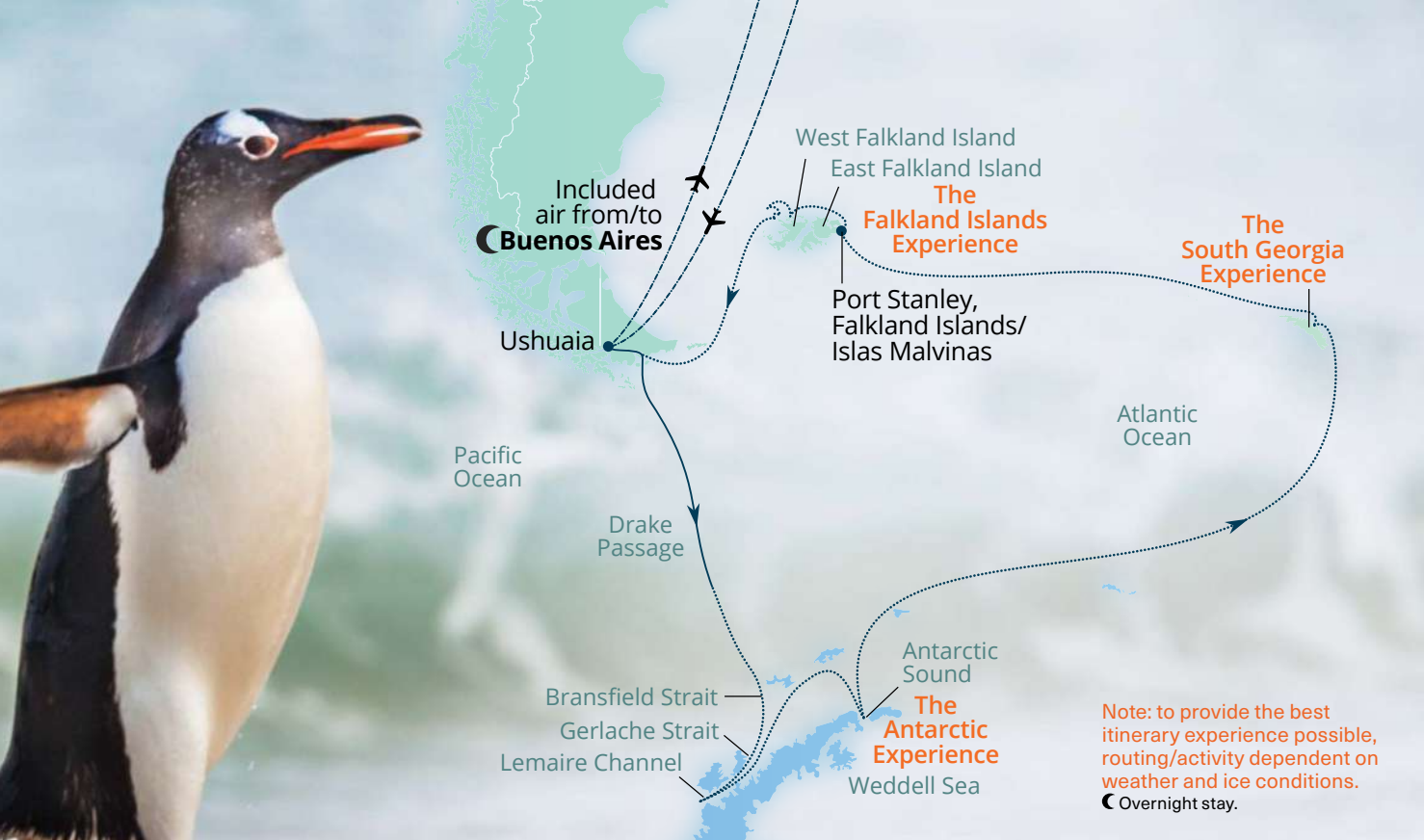
### DAYS 10-14: AT SEA & THE SOUTH GEORGIA EXPERIENCE

Reflect on your time in Antarctica during two days at sea as you make your way to **South Georgia**. Around 450,000 pairs of king penguins breed on this sub-Antarctic island, while skuas, petrels, albatrosses, and penguins nest along its shores. A few million fur seals hustle about, and hundreds of thousands of elephant seals gather in haul-outs so immense they must be seen to be believed. Included Zodiac cruises, landings, and hikes offer opportunities to marvel at the glacier-covered mountains, photograph the abundant wildlife, and visit the grave of explorer Sir Ernest Shackleton.

### DAYS 15-19: AT SEA & THE FALKLAND ISLANDS EXPERIENCE

The **Falkland Islands'** windswept slopes are an ornithologist's dream.





Black-browed albatrosses circle overhead while rockhopper penguins skip comically among the tussock grasses. Imperial shags nest along rocky outcrops where curious striated caracaras watch intently. During your three days in this remote archipelago, we'll find the best landing spots among West and East Falkland and the over 200

smaller islands that surround them. You'll walk across vast, untouched landscapes, with your Expedition Team on hand to point out wildlife and offer expert insights.

#### Possible experiences include:

##### Steeple Jason, West Falklands:

Join the Expedition Team for a Zodiac landing on Steeple Jason. It's home to the largest breeding colony of black-browed albatrosses in the world, and rockhopper penguins live and breed right among the majestic birds.

##### Saunders Island, West Falklands:

Saunders Island may be one of the only places where sheep and penguins mingle. Arrive by Zodiac to explore the first British settlement in the Falklands and see descendants of the original sheep farmers grazing their flocks.

**Stanley, East Falklands:** Head out on an off-road adventure and watch for black-necked swans, Chiloé wigeons, and speckled teals in the flatlands as you make your way to Bertha's Beach. The white sands here are home to a colony of around 800 gentoo penguins. Observe their playful antics and learn about the endemic flowering plants in the area.

#### DAYS 20-21: AT SEA, USHUAIA & BUENOS AIRES



Enjoy elegant multi-course meals in The Restaurant and unwind with a massage in the Spa as you return to Ushuaia for your **included flight back to Buenos Aires** to culminate your journey.



#### LEGEND:



IMAGE MASTERS



ZODIAC



KAYAKING



SUBMARINES

CONTACT YOUR TRAVEL ADVISOR, CALL SEABOURN AT 1.888.873.2675, OR VISIT SEABOURN.COM



# HIGHLIGHTS OF the South Pacific

## Cultural Experiences

Experience firsthand ancient traditions still practiced today. Join a kava ceremony in Samoa, taste taro in Papua New Guinea, and watch Pentecost's daring "land divers."



## Snorkeling the Pacific

Plunge into crystalline waters across French Polynesia, Vanuatu, the Solomon Islands, and more, marveling at unspoiled coral reefs, parrotfish, turtles, and relics from World War II.



## Striking Landscapes

Witness a stunning variety of landscapes from lush volcanic peaks to azure swimming holes shrouded by jungle. Your Expedition Team will lead you to the best spots so you can see the natural beauty up close.



April–October 2026  
11- to 92-day sailings

## Captivating Wildlife

Watch for red-tailed tropicbirds and blue lorikeets above, manta rays and sea turtles below, and geckos and coconut crabs scurrying about looking for their next meal.



“

It was a fantastic educational two days. One of the wonders of the world and the guides were excellent.”

— Walker M. on visiting Easter Island

f



## Dinner Under the Stars

Dine beneath the stars of the Southern Cross at The Patio. Our al fresco dining experience features a fresh and imaginative menu in a comfortable yet sophisticated setting.



## REMOTE ISLANDS OF THE PACIFIC & NEW GUINEA

*Choose your segment of this epic adventure on Seabourn Pursuit below.*

Itinerary & Ship	From/To Port	Departure Date(s)
<b>19-DAY EASTER &amp; PITCAIRN ISLANDS: MAROONED, MOAI &amp; MUTINEERS</b> Seabourn Pursuit	San Antonio (Santiago) to Papeete	APR 2, 2026
<b>11-DAY POLYNESIA &amp; MELANESIA: ISLAND CULTURES &amp; CORAL COASTS</b> Seabourn Pursuit	Papeete to Lautoka	APR 21, 2026
<b>16-DAY REMOTE INDONESIA &amp; PAPUA NEW GUINEA</b> Seabourn Pursuit	Lautoka to Darwin	MAY 3, 2026
<b>30-DAY ACROSS OCEANIC CULTURES: CHILEAN COAST TO FIJI</b> Seabourn Pursuit	San Antonio (Santiago) to Lautoka	APR 2, 2026
<b>27-DAY POLYNESIA, MELANESIA &amp; INDONESIA EXPLORER</b> Seabourn Pursuit	Papeete to Darwin	APR 21, 2026

### JUAN FERNÁNDEZ EXPERIENCE

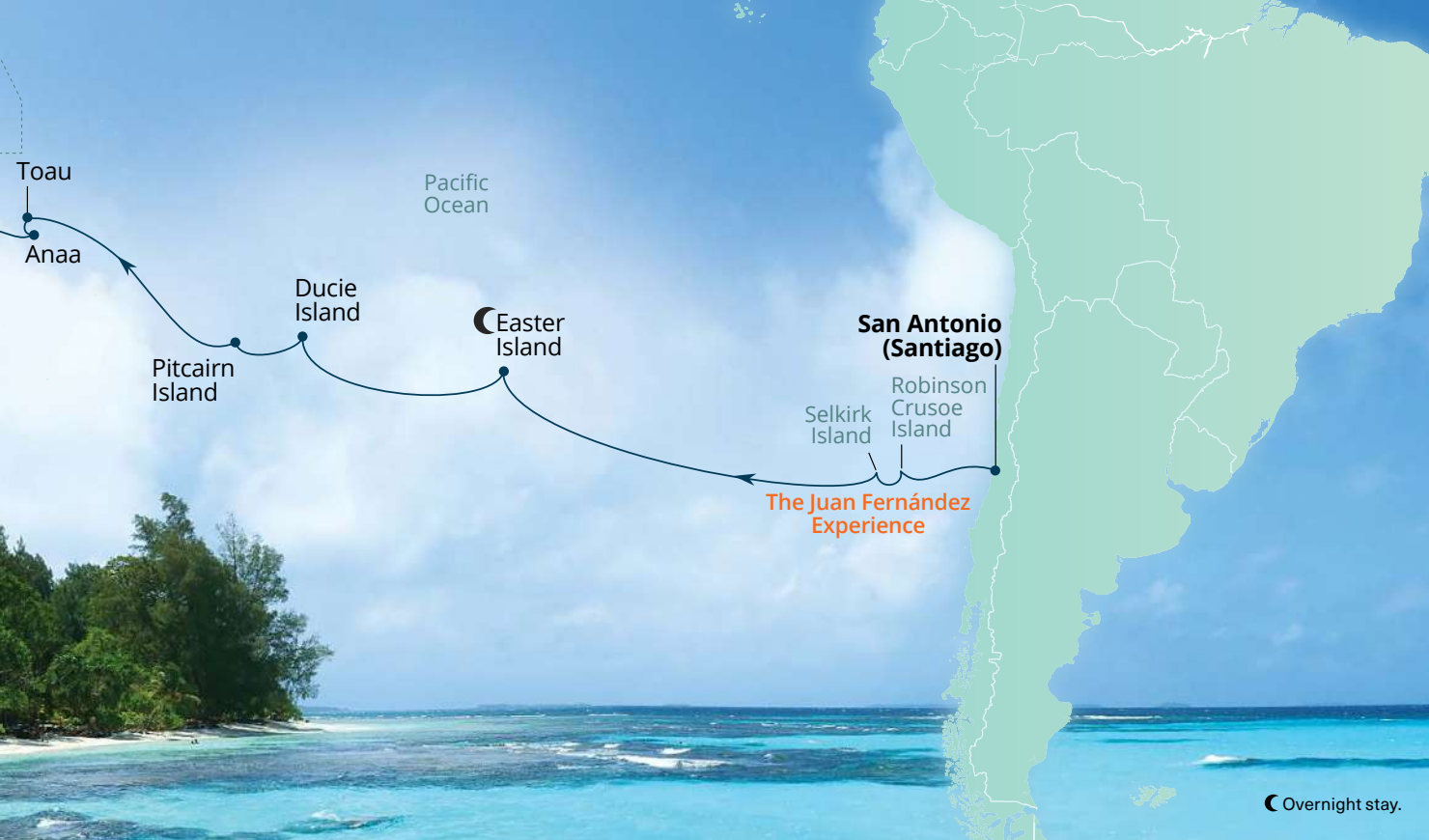
Rugged beauty and unique biodiversity define this remote archipelago, 400 miles off Chile. Depending on weather and conditions, you may visit **Robinson Crusoe Island** for a coastal hike or optional submarine dive to the WWI wreck of SMS *Dresden*, or circle **Selkirk Island** on a Zodiac® to spot pink-footed shearwaters and Juan Fernández fur seals.



### PITCAIRN ISLAND GROUP

Spend a day snorkeling incredibly intact coral reefs and watching the skies for red-tailed tropicbirds, masked boobies, and other nesting seabirds around uninhabited **Ducie Island** before traveling further to **Pitcairn Island**. This isolated speck in the Pacific harbors one of history's most fascinating communities — descendants of HMS *Bounty* mutineers. Navigating Bounty Bay's challenging swells rewards guests with a tour of Adamstown, where you can find cannons salvaged from the infamous ship and hear stories passed down for generations.





## TUAMOTU ARCHIPELAGO

The Tuamotu Archipelago is dotted with breathtaking atolls like **Toau** and **Anaa**, where fringing reefs offer spectacular snorkeling. Glide alongside blacktip reef sharks, giant trevallies, and vibrant butterflyfish; relax on a white-sand beach; and meet some of the friendly people who call these islands home.

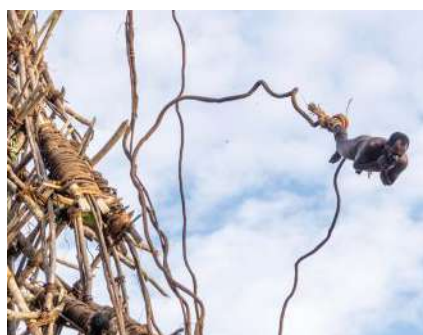


## VANUA BALAVU

The island of **Vanua Balavu** is long and narrow, with just 1,200 people scattered in hamlets along the coast. It's considered remote even for Fiji, and the reefs keep larger ships at bay. Enjoy a warm, traditional welcome from the people of Lomaloma before visiting a local school

and touring the village, culminating in a performance of Fijian music and dance.

## AMBRYM & PENTECOST ISLAND



Experience two unforgettable cultural events in Vanuatu. On **Ambyrm**, witness the ceremonial Rom Dance, which features rhythmic energy and elaborate costumes made from leaves, tree bark, and feathers. Then catch your breath as **Pentecost Island** land divers leap from high platforms with vines tied to their ankles, a ritual believed to have inspired modern-day bungee jumping.

## CONFLICT ISLANDS

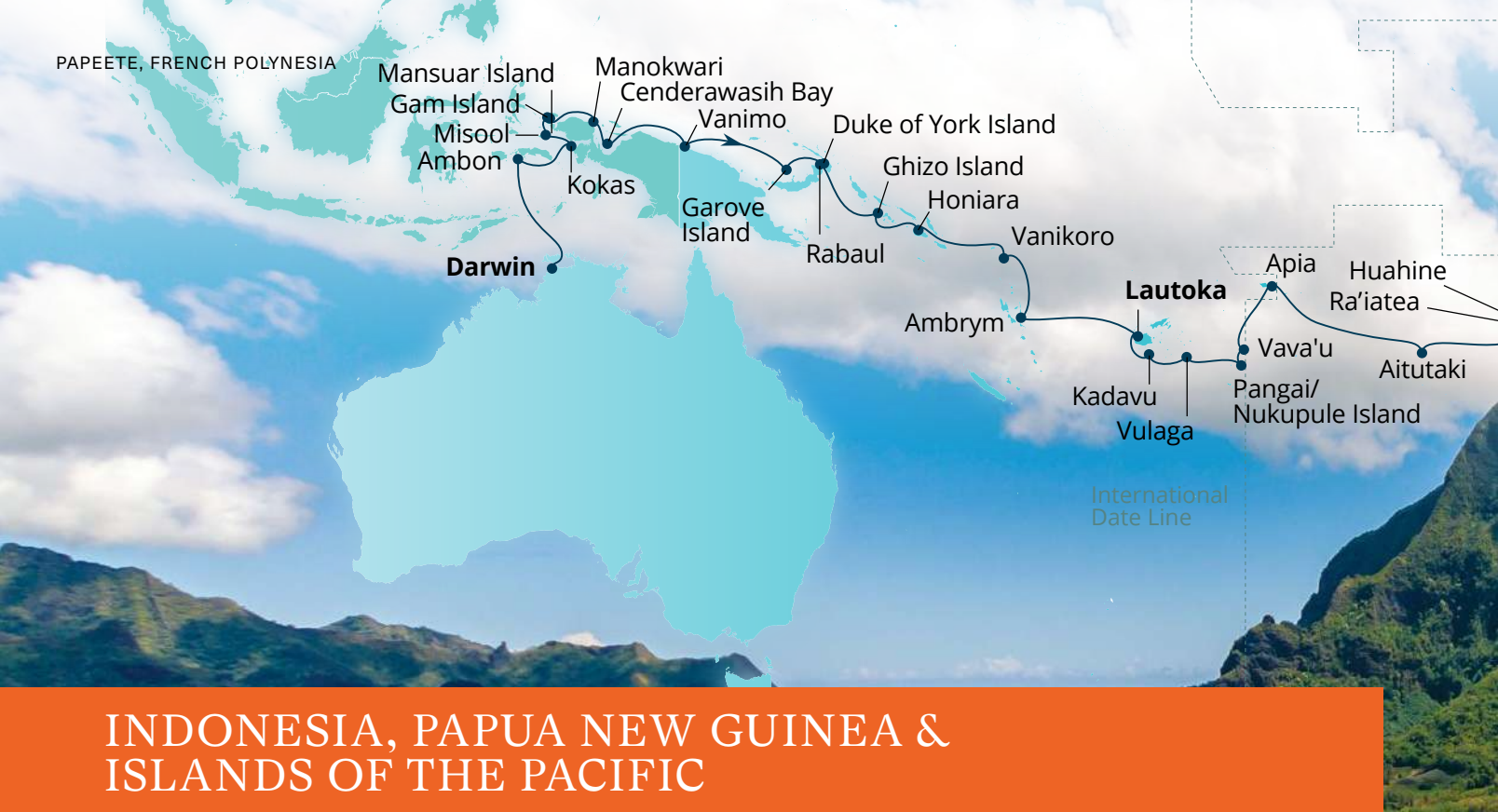
This idyllic archipelago off the coast of New Guinea is privately owned by a passionate conservationist who insists

on sustainable methods for any activity. Choose from two included options: a guided snorkel tour of one of the world's most biodiverse reef systems or a conservation tour that includes visits to a turtle nursery and coral nursery.

## AGATS

From **Agats**, ride by Zodiac through the Asewet River delta of West Papua, Indonesia, to a village of the Asmat people. Virtually undisturbed until the mid-20th century, the region was once known for head hunting but is now renowned for its exquisite wood carvings, which are sought by collectors worldwide.





# INDONESIA, PAPUA NEW GUINEA & ISLANDS OF THE PACIFIC

Choose your segment of this incredible journey on Seabourn Pursuit below.

Itinerary & Ship	From/To Port	Departure Date(s)
<b>22-DAY REMOTE INDONESIA &amp; ISLANDS OF THE PACIFIC THEATRE</b> Seabourn Pursuit	Darwin to Lautoka	SEP 12, 2026
<b>13-DAY MELANESIA &amp; POLYNESIA: ISLAND CULTURES &amp; CORAL COASTS</b> Seabourn Pursuit	Lautoka to Papeete	OCT 4, 2026
<b>19-DAY EASTER &amp; PITCAIRN ISLANDS: MAROONED, MOAI &amp; MUTINEERS</b> Seabourn Pursuit	Papeete to San Antonio (Santiago)	OCT 16, 2026
<b>35-DAY INDONESIA, NEW GUINEA &amp; CULTURES OF OCEANIA</b> Seabourn Pursuit	Darwin to Papeete	SEP 12, 2026
<b>32-DAY ACROSS OCEANIC CULTURES: FIJI TO THE CHILEAN COAST</b> Seabourn Pursuit	Lautoka to San Antonio (Santiago)	OCT 4, 2026

## KOKAS

**Kokas** is home to natural splendors and fascinating WWII history, but it's best known for its stunning petroglyphs. Take a Zodiac® to nearby caves to see incredible rock art thousands of years old, the ochre handprints and animal drawings still vivid.

## RAJA AMPAT & CENDERAWASIH BAY

Off West Papua, enter a magical region known as **Raja Ampat**, where dramatic



limestone karsts pierce some of the most biodiverse waters on the planet. Plunge into the turquoise waters around **Misool**, **Gam**, and **Mansuar islands** in search of parrotfish, turtles, angelfish, and colorful corals. In **Cenderawasih Bay**, swim with whale sharks, the world's largest fish.

## PAPUA NEW GUINEA

Papua New Guinea is home to some of the healthiest coral reefs in the world, along with more than 10,000 ethnic clans. Watch school children in **Garove** perform





traditional dances. Explore the **Duke of York Islands'** unspoiled beaches and stunning coral. In **Rabaul**, delve into world war history and witness the sacred ritual of a Baining fire dance.



## TONGA

Start your time in Tonga in the seldom-visited Ha'apai group. Visit the Velata Mound Fortress and other cultural sites around **Pangai** and snorkel in the waters surrounding uninhabited **Nukupule Island**. Then make your way to **Vava'u** to stroll through the lush 'Ene'io Botanical Garden or learn about local traditions such as fire dancing, tapa cloth making, and earth oven cooking.

## FRENCH POLYNESIA

Experience authentic Polynesian culture. Come ashore by Zodiac to **Ra'iatea** for a



visit to Marae Taputapuatea, an open-air temple comprised of several sacred sites built of stone and coral. In **Huahine**, see fish traps made using centuries-old techniques and feed sacred blue-eyed eels for luck. Browse **Papeete's** lively market for pearls or *poisson cru*.

## EASTER ISLAND

Despite its secluded location more than 2,000 miles from the Chilean coast,



**Easter Island** boasts a bevy of sights that attract visitors from around the world. With two full days on this captivating island, you'll have time to explore them all. Take part in an included excursion to witness the awe-inspiring heritage of the indigenous Rapa Nui people, whose ancestors carved the towering statues, called moai, that watch over the island. Between the 13th and 17th centuries, hundreds of these mysterious figures were carved and transported across the island. Then hear legends of the bird-man cult at the remains of Orongo Village. Elders here would choose competitors to leap from the sheer cliffs into the waters below in search of sooty tern eggs. The first of the fearless swimmers to return safely would secure a year of rule for their leader.

Overnight stay.





# HIGHLIGHTS OF The Kimberley



## Uunguu Cultural Experience

The Wunambal Gaambera Traditional Owners' history and connection to The Kimberley region date back tens of thousands of years. As we sail throughout the area, members of the Traditional Owners will share their culture with you through special ceremonies, rock art tours, and more.



## Zodiac® Adventures

Our nimble Zodiac boats offer access to tiny islands and wild frontiers. Join our Expedition Team and discover rugged sandstone peaks, majestic canyons, gushing waterfalls, striking coastlines, sunken mangroves, and more.



## Creatures of The Kimberley

These diverse ecosystems are home to some 65 species found nowhere else on Earth. Along with marsupials, flying foxes, and some 300 species of birds, you can find enormous saltwater crocodiles, dugongs, snubfin dolphins, and one of the world's largest breeding grounds for humpback whales.



## THE KIMBERLEY EXPEDITIONS

**May–September 2026**  
**10- to 82-day sailings**

### Enriching Lectures

Dive deeper into local history, culture, and wildlife with stimulating discussions led on board by members of the Expedition Team.



“

Best cruise of our life on Seabourn Pursuit through the Kimberley 2024 and we've done many on other ships so far! Unique experience on an expedition ship and amazing crew too!"

— Christine S. 



### Image Masters Photography Masterclass

Join award-winning photographers on outings that help you capture The Kimberley's dramatic vistas, ancient rock art, and vivid sunsets. Learn expert techniques, review your shots in small groups, and return home with a portfolio worthy of this extraordinary wilderness.





## 10-DAY KIMBERLEY EXPEDITION: WATERFALLS & WANJINAS



DARWIN TO BROOME | MAY 19, JUN 7, 26, JUL 6, 16, AUG 4, 23, SEP 2, 2026 | SEABOURN PURSUIT



### DAYS 0-1: DARWIN & AT SEA

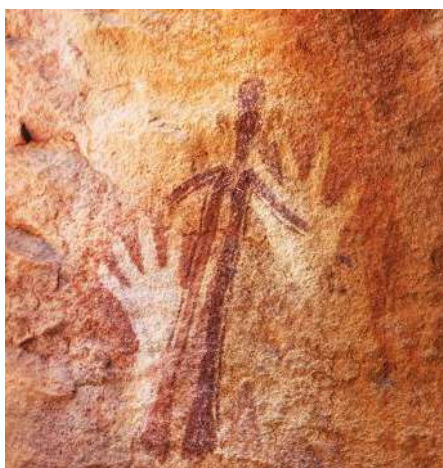
Welcome to Australia's Northern Territory, a region full of wonders with very few inhabitants. It's the perfect place to begin exploring the rarely visited Kimberley coastline.

### DAY 2: KING GEORGE RIVER

Board a Zodiac® with your Expedition Team and head up the **King George River** to King George Falls, the highest twin waterfalls in Western Australia. Wind through a sandstone canyon with incredible honeycomb and vertical erosion and keep a lookout for saltwater crocodiles napping on the river banks.

### DAY 3: VANSITTART BAY (JAR ISLAND)

A short Zodiac ride with your Expedition Team takes you to **Jar Island**, where, according to Aboriginal legend, the rock art was created by birds known as Gwion Gwion. The graceful human figures are surprisingly sophisticated, and are thought to be some 12,000 years old.



### DAY 4: ASHMORE REEF

Part of a protected marine park nearly 200 miles off the Australian coast, **Ashmore Reef** is bursting with life. Take advantage of the fact that there are no saltwater crocodiles at this site and snorkel among corals, angelfish, and blue starfish. Or go birding by Zodiac to see some of the many

seabirds that nest here, including red-footed boobies and white-tailed tropicbirds.

### DAY 5: HUNTER RIVER & MITCHELL FALLS

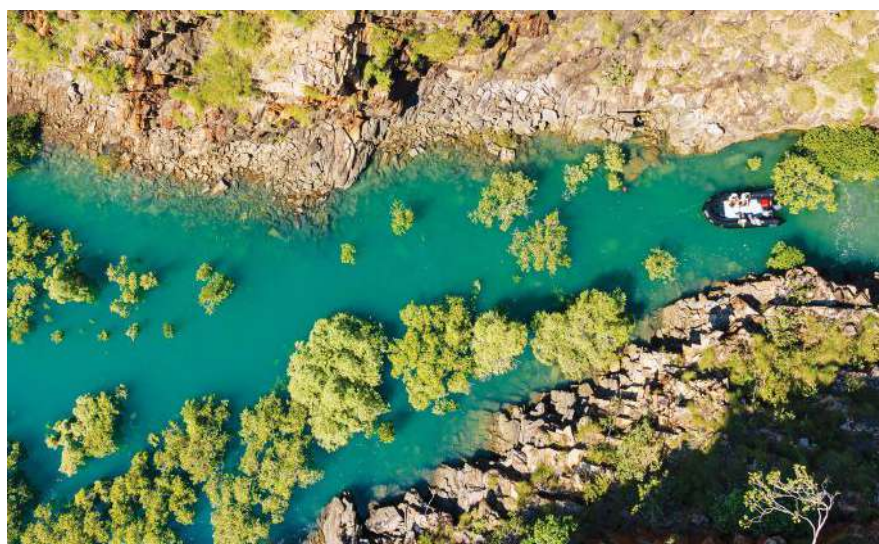
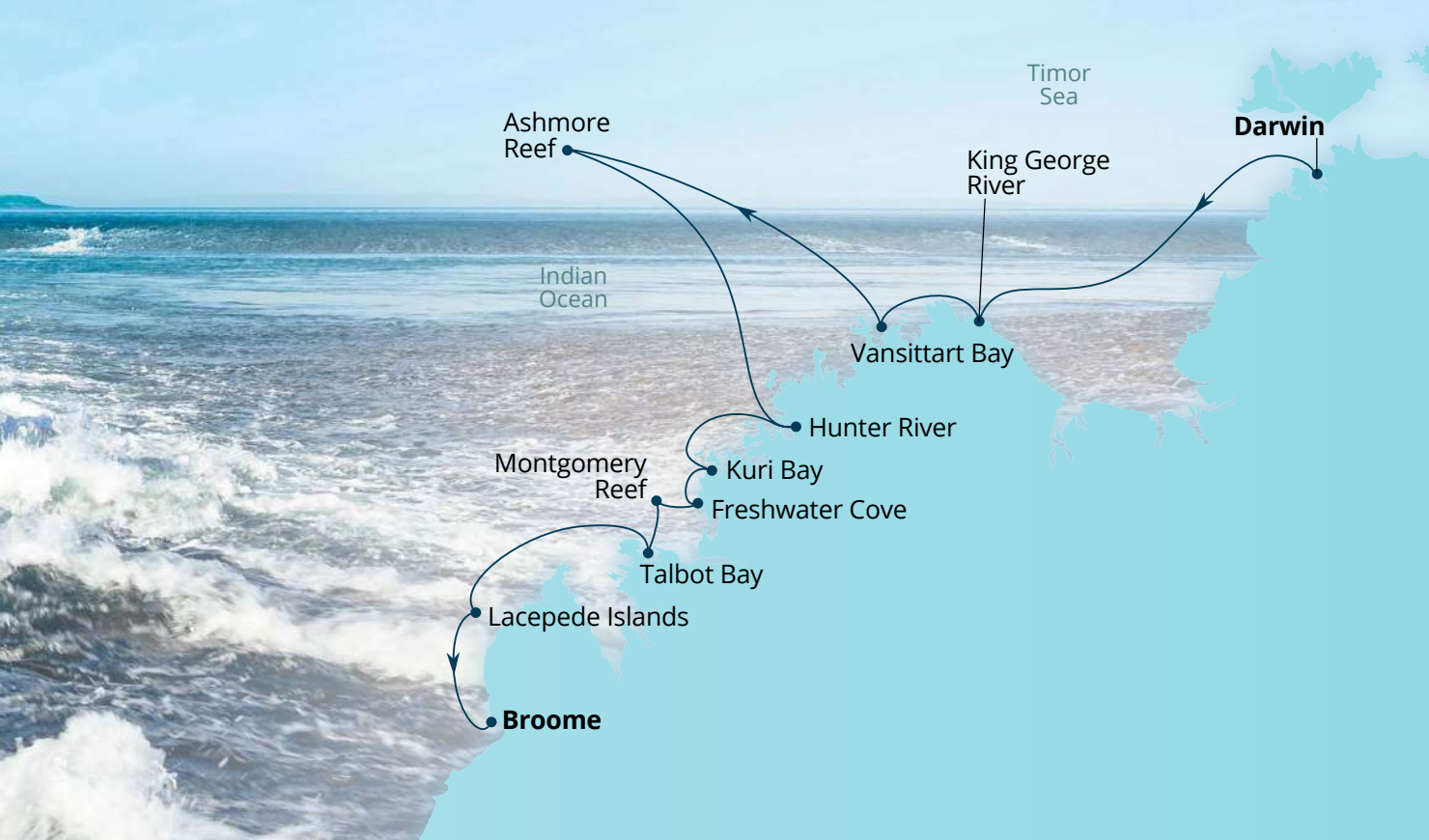
A large mangrove estuary at the mouth of the **Hunter River** leads to Porosus (Crocodile) Creek. Head upriver by Zodiac as your Expedition Team calls out sightings of osprey, white-tailed sea eagles, and the abundant saltwater crocodiles. An optional helicopter flight takes you to see spectacular multi-tiered Mitchell Falls.



### DAY 6: KURI BAY

Get an intriguing glimpse into the South Sea pearl industry at the Paspaley base, hearing directly from the operations





manager about the entire process from seeding to market. During your Zodiac rides between ship and shore, your Expedition Team will point out tawny nurse sharks in the crystal-clear waters below you.

#### DAY 7: FRESHWATER COVE & MONTGOMERY REEF

Start your day in **Freshwater Cove** with the warm welcome of the local Arraluli clan as they share their traditional

face-painting ceremony with you. Members of the Traditional Owners will guide you to a rock overhang that serves as a Wanjina dreamtime art gallery and tell stories that have been passed down for generations. Then head by Zodiac to **Montgomery Reef**, where extreme tidal changes expose up to 13 feet of reef at low tide, creating a smorgasbord for birds, turtles, manta rays, blacktip reef sharks, and dugongs who feast on the fish trapped by the retreating water.

#### DAY 8: TALBOT BAY & HORIZONTAL WATERFALLS

**Talbot Bay** is famous for its horizontal waterfalls, where water squeezes through slender gaps due to the force of the tide. Observe the captivating natural phenomenon on a Zodiac adventure through narrow gorges lined with serrated sandstone cliffs.

#### DAY 9: LACEPEDE ISLANDS

These flat, sandy atolls are a key nesting site for brown boobies, crested terns, and sooty oystercatchers; and green sea turtles breed in the surrounding lagoons. Trace their coastlines by Zodiac with your Expedition Team, remaining off shore to keep from disturbing the feathered residents.

#### DAY 10: BROOME

Your Kimberley Expedition ends in **Broome**, a town once known for pearling that is today a gem in its own right.

# HIGHLIGHTS OF the Arctic & Northern Europe



## Arctic Wildlife

Watch the pack ice for seals, walruses, and polar bears; scan the tundra for reindeer and Arctic fox; and keep your eyes peeled for belugas and bowhead whales.



## The Northwest Passage

Follow in the footsteps of Amundsen, Franklin, and others as you navigate the legendary Northwest Passage, charting a course steeped in history.



## Greenland's Glaciers & Fjords

Board a Zodiac® and cruise past imposing peaks, calving glaciers, and towering pillars of ice as you traverse some of the largest fjord systems in the world.



July–September 2026  
10- to 37-day sailings

## Scotland's Wild Islands

Bustling seabirds, rural villages, and archaeological riches await across Scotland's Inner and Outer Hebrides. Examine the ancient stone huts of St. Kilda, glide along the sheer cliffs of Isle of Noss, and search for nesting puffins.



“

I can't think of a better combo than Seabourn Venture and the Scottish Isles.”

— Tina G. 



## Alluring Iceland

Marvel at otherworldly landscapes, from the black sand beaches and eroded craters of Snæfellsjökull National Park outside Grundarfjörður to the thunderous Dynjandi Waterfall.



## 37-DAY NORTHWEST PASSAGE & WILD LABRADOR COAST



ANCHORAGE TO HALIFAX | AUG 29, 2026 | SEABOURN VENTURE

### DAYS 0-8: ANCHORAGE, NOME, HERSCHEL ISLAND & AT SEA

Embark in **Anchorage** and sail to **Nome**, which was made suddenly famous when gold was discovered here in 1898. Continue to the Yukon Territory for a visit to **Herschel Island**. Formerly a whaling center, the abandoned island is now a haven for nesting black guillemots.



### DAYS 9-16: THE NORTHWEST PASSAGE EXPERIENCE & CAMBRIDGE BAY

To sail through the famed **Northwest Passage** is to accomplish something many people spent centuries searching and striving for. Your activities here will be flexible, as the ice determines how we proceed, but this is a wonderland of rugged tundra, historical remains, modern Inuit communities, and sea ice that serves as an essential habitat. Set off by Zodiac®, kayak, and submarine, using

your ship as a home base. Explore remote destinations like Coningham Bay, where polar bears roam, and Johansen Bay, where orange lichen blankets the hillsides. And stop along the way in **Cambridge Bay** to meet the residents and try delicacies like musk ox.

### DAYS 17-18: CROKER BAY, DUNDAS HARBOUR & AT SEA

In the morning, visit **Croker Bay** to see the tidewater glacier at its head. This region is a breeding site for seabirds, and seals and walrus are often sighted here. Then head to **Dundas Harbour**, a former post for the RCMP. See the remains of the old outpost and visit stone home sites that were long ago inhabited by the Thule people. During your next day at sea, visit the Bow Lounge to learn about the ship's navigations and watch for wildlife.

### DAYS 19-20: AT SEA & ILULISSAT

Named for the Greenlandic word for iceberg, **Ilulissat** sits at the end of the Jakobshavn Glacier (Sermeq Kujalleq) fjord. Witness the incredible icebergs that have come 25 miles from the face of the glacier and out to sea. In the nearby Sermermiut Valley, the new Icefjord Centre blends the importance of the ice with the human history of the region.



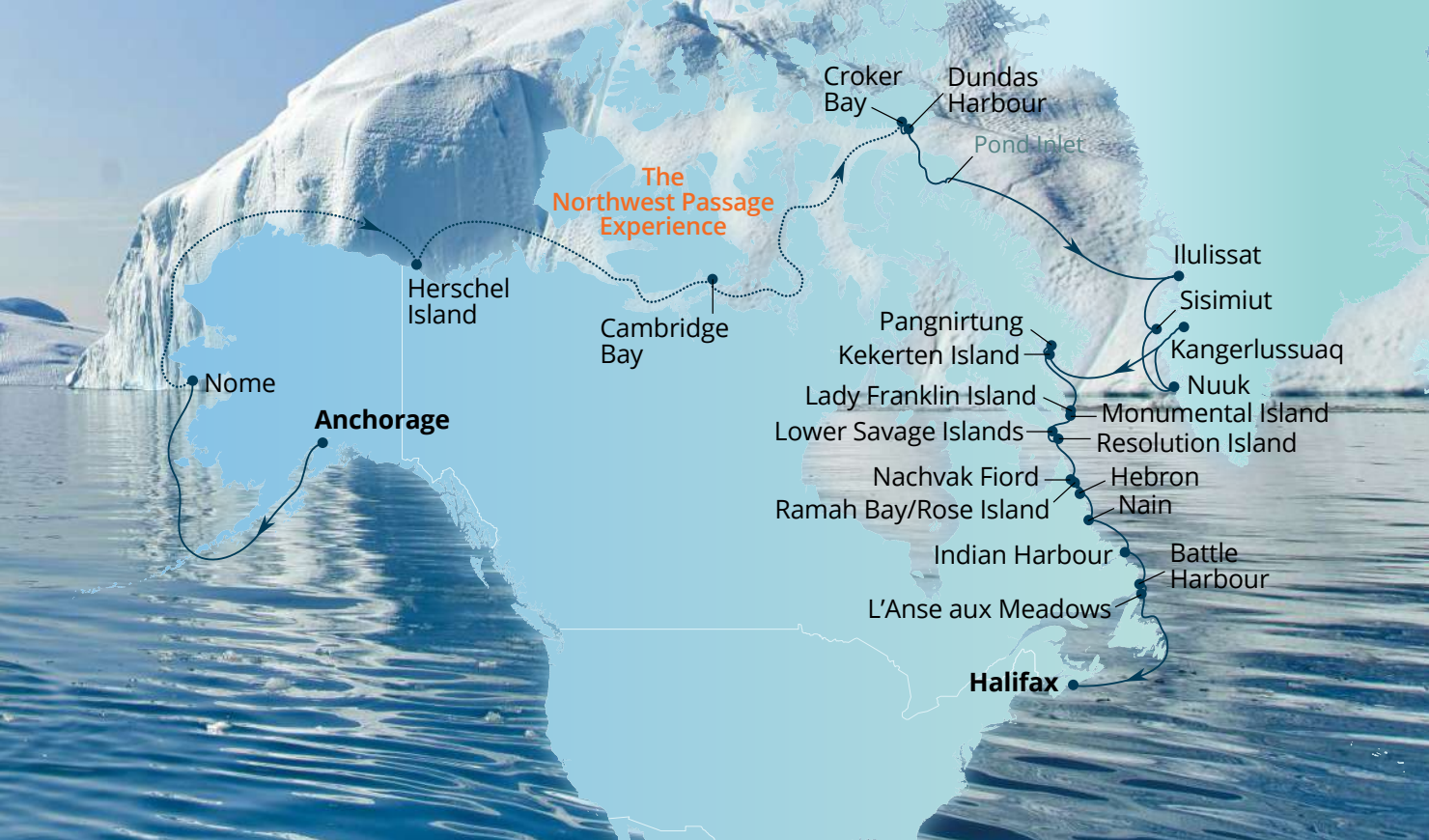
### DAYS 21-24: SISIMIUT, NUUK & KANGERLUSSUAQ

Continue your way down Greenland's west coast. Hike part of the Arctic Trail from **Sisimiut** and delve into the historical and cultural exhibits of the Greenland National Museum in the capital of **Nuuk**.

### DAY 25: PANGNIRTUNG & KEKERTEN ISLAND

In the village of **Pangnirtung** on Baffin Island you'll find stunning Arctic landscapes and a strong Inuit cultural heritage. Stay for a cultural performance and shop for native crafts like distinctive "Pang hats" at the Uqqurmiut Centre for Arts & Crafts. On **Kekerten Island** in Baffin Bay, go ashore by Zodiac to view the remains of an old settlement and whaling station.





### DAYS 26-27: LADY FRANKLIN, MONUMENTAL, LOWER SAVAGE & RESOLUTION ISLANDS

Have your binoculars ready for thrilling wildlife encounters around these uninhabited and secluded islands, where Atlantic walrus, seals, and breeding seabirds thrive. Scan the shorelines for polar bears patrolling the rocky terrain and watch for whales feeding in the waters. At night, keep your eyes peeled for a dazzling display of the Northern Lights.

### DAYS 28-29: NACHVAK FIORD, RAMAH BAY & ROSE ISLAND, TORNGAT MOUNTAINS NP

The incredible glacial landscapes of **Torngat Mountains National Park** have been shaped by ice for millennia. Take in

its dramatic peaks, search for caribou and Arctic foxes, and learn about its hundreds of Inuit archaeological sites on Zodiac and hiking expeditions.

### DAYS 30-32: HEBRON, NAIN & INDIAN HARBOUR

Continue down the Newfoundland and Labrador coast, going ashore in **Hebron** to examine the remains of a 19th-century mission. Enjoy a guided walk through the Inuit community of **Nain** and learn more about Inuit culture at the impressive Illusuk Cultural Centre. Then discover the one-time cottage hospital and fishing outpost of **Indian Harbour**, another window into Newfoundland's past and way of life.

### DAYS 33-37: BATTLE HARBOUR, L'ANSE AUX MEADOWS & HALIFAX

Immerse yourself in the maritime traditions of **Battle Harbour** and see the excavated remains of an 11th-century Viking site in **L'Anse aux Meadows** before cruising along the towering cliffs of Newfoundland and on to **Halifax** to end your journey.

**Note:** to provide the best itinerary experience possible, routing/activity dependent on weather and ice conditions.

## MORE PATHS TO ADVENTURE

Itinerary & Ship	From/To Port	Departure Date(s)
<b>24-DAY JOURNEY ACROSS THE NORTHWEST PASSAGE</b> Seabourn Venture	Reykjavik to Anchorage	AUG 5, 2026
<b>24-DAY JOURNEY ACROSS THE NORTHWEST PASSAGE</b> Seabourn Venture	Anchorage to Reykjavik	AUG 29, 2026
<b>34-DAY GLACIERS, FJORDS &amp; NORTHWEST PASSAGE</b> Seabourn Venture	Reykjavik to Anchorage	JUL 26, 2026

#### LEGEND:



IMAGE MASTERS



ZODIAC



KAYAKING



SUBMARINES

## 10-DAY WILD SCOTTISH ISLES & ICELAND

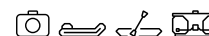


DUBLIN TO REYKJAVÍK | JUL 6, 2026 | Seabourn Venture

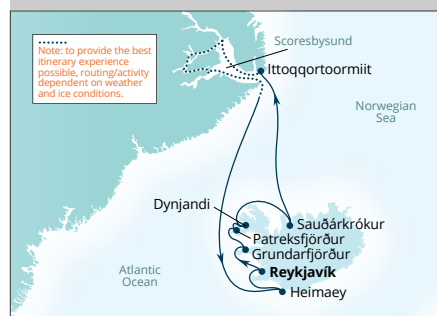


ST. KILDA, SCOTLAND, UK

## 10-DAY ICELAND & SCORESBYSUND

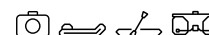


ROUND-TRIP REYKJAVÍK | JUL 16, 2026 | Seabourn Venture



ITTOQQORTOORMIIT, GREENLAND

## 12-DAY GLACIERS, FJORDS & INDIGENOUS CULTURES



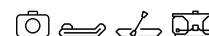
ROUND-TRIP REYKJAVÍK | JUL 26, 2026 | Seabourn Venture



QAQORTOG, GREENLAND

Overnight stay.

## 15-DAY WILD LABRADOR COAST: MISSIONS, FJORDS & WILDERNESS



REYKJAVÍK TO HALIFAX | SEP 20, 2026 | Seabourn Venture



HALIFAX, NOVA SCOTIA, CANADA

Overnight stay.

LEGEND:



IMAGE MASTERS



ZODIAC



KAYAKING



SUBMARINES

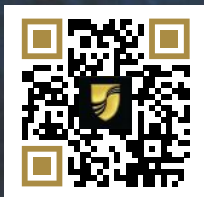


## NEW 2027-2028 SEABOURN EXPEDITIONS

Antarctica | Arctic & British Isles

The Kimberley | South Pacific | Northwest Passage

First-ever Grand Expedition



Scan the QR code to  
see the Expeditions  
and book now.







SEABOURN®



[www.ssstravel.de](http://www.ssstravel.de)

Trogerstr. 40 81675 München

Tel.089/472820 [info@ssstravel.de](mailto:info@ssstravel.de)

CONTACT YOUR TRAVEL ADVISOR  
OR CALL SEABOURN AT 1.888.873.2675. VISIT SEABOURN.COM.