

THE FREEDOM TO EXPLORE THE
BEAUTY OF OUR WORLD



THE RITZ-CARLTON
YACHT COLLECTION



YACHTING VOYAGES TO THE CARIBBEAN, MEDITERRANEAN,
NORTHERN EUROPE, AFRICA, ASIA, ALASKA AND SOUTH PACIFIC

LET THE JOURNEY BEGIN ...

INTRODUCTION	04	OUR YACHTS	32
THE EXPERIENCE	07	OUR SPACES	40
OUR SHORE EXCURSIONS	26	OUR SUITES	48
OUR DESTINATIONS	29	AIR & HOTEL CONCIERGE	68
ITINERARIES AT-A-GLANCE	30	MARRIOTT BONVOY	70



EMBRACE THE YACHTING LIFESTYLE

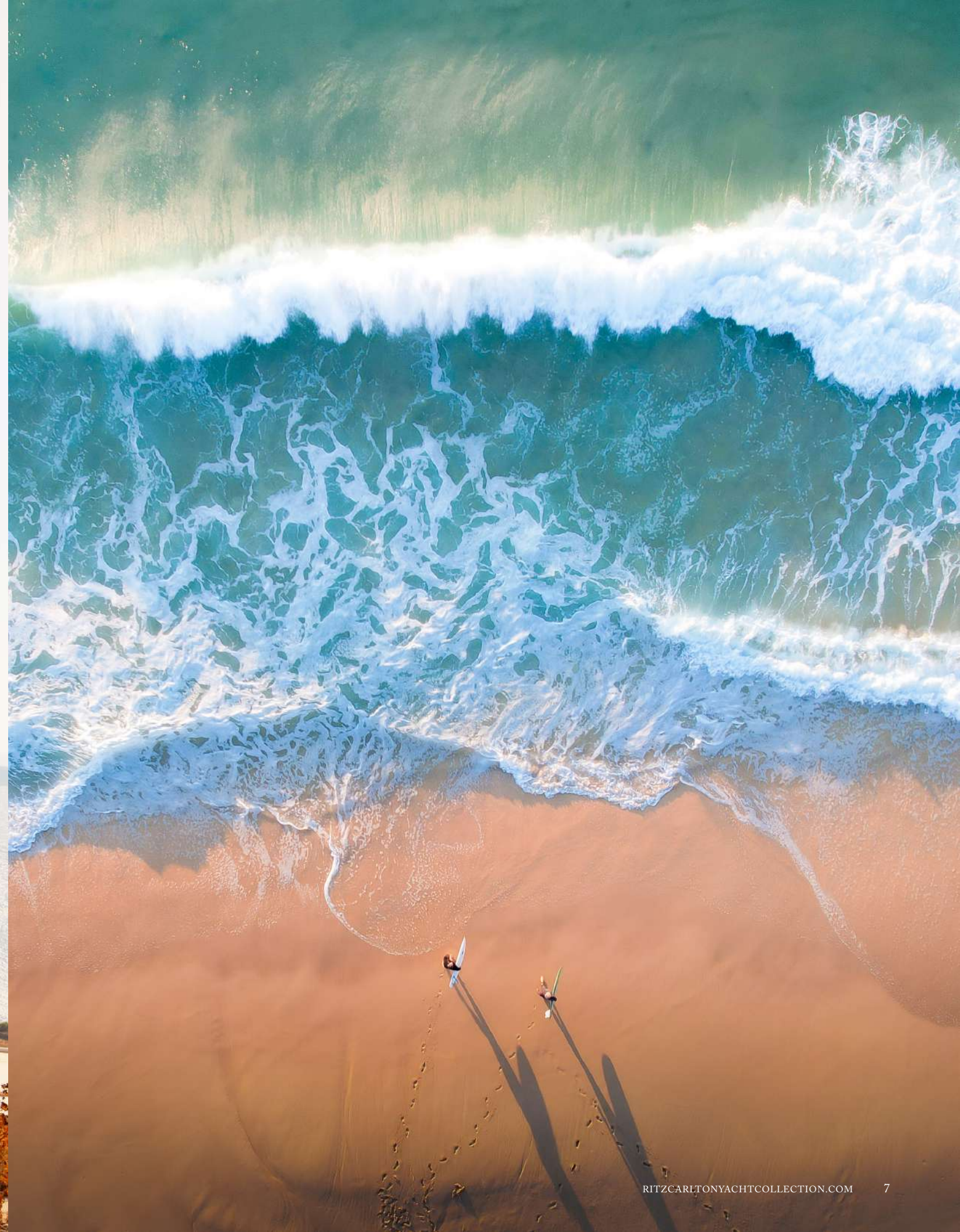
Experience the unbridled joy inspired by new discoveries on a journey with The Ritz-Carlton Yacht Collection. Sail into the heart of iconic cities and drop anchor off exquisite, unexpected island hideaways, exploring the world's wonders at a relaxed pace that allows immersion in life's exceptional experiences.

The freedom and flexibility of the yachting lifestyle let you discover your next adventure wherever your passion and curiosity lead, all while traveling in the comfort of an intimate setting with an elevated level of care and attention.

Enlivened and enlightened, marvel at the beauty of the world through fresh eyes.

FEEL THE WORLD

Every journey has the power to transport us — physically, emotionally, intellectually. At each turn, we've designed something — an evening of unexpected entertainment, an unforgettable meal, an exclusive excursion ashore — to inspire awe and amazement. We strive to create opportunities to satisfy your deep curiosities, awaken new passions, and foster the spirit of adventure that makes travel so rewarding.



FEEL TRANSPORTED

An expanse of open ocean awaits on your private terrace each morning, as the sun warms your skin and the salt breeze stirs your soul. The yacht experience is energizing yet relaxed, seamlessly weaving moments of serene repose and blissful indulgence into a journey of discovery.

A wide-angle photograph of a modern yacht's deck. The deck is made of light-colored wood and features a curved bar with white stools on the left. In the center, there is a rectangular swimming pool with a glass railing. To the right of the pool is a long, curved lounge sofa with light blue cushions and several red and patterned throw pillows. In the foreground, there is a white rectangular table set with blue placemats, white plates, and blue glassware. The yacht has multiple levels with white railings and wooden handrails. The background shows a vast blue ocean under a clear sky with a few clouds.

FEEL AT EASE

Find peace of mind on board, knowing that every detail of your surroundings has been considered. With one of the highest ratios of space per guest at sea, each yacht in the collection has been thoughtfully designed to fuse the spacious, residential feel of The Ritz-Carlton® properties with the innovative design quality of the world's most stylish yacht interiors. Here, luxury and comfort are synonymous; simplicity and elegance go hand-in-hand.

FEEL CONSIDERED

With nearly one crew member for every guest, our Ladies and Gentlemen ensure that your every need is met with genuine care. From handcrafting your favorite cocktail for a sunset toast to planning a bespoke excursion that satisfies your taste for adventure, personalized service is at the heart of the yacht experience.





FEEL SPONTANEOUS

With direct access to the water from our marina-style platform, the ocean is your playground. Explore new coastlines by kayak, enjoy an afternoon of sailing or find your center as you try your hand at paddleboarding. When you're ready to relax, settle into a chaise lounge and soak up the last rays of sun with a handcrafted signature cocktail.

A group of people are relaxing on a yacht deck. A man in a straw hat and sunglasses stands on the left, holding a drink. A woman in a white shirt and sunglasses sits in the center, holding a drink. A man in a white shirt and sunglasses sits on the right. A woman in a blue patterned dress sits in the foreground. The background shows a view of the ocean and mountains under a clear sky.

CREATE A CONNECTION

Combining casual luxury with comfortable surroundings, each space has been designed to allow you to connect with family and friends, or simply unplug and enjoy time to yourself. Enjoy a refreshing beverage while making new acquaintances at The Marina. Find an intimate alcove in The Living Room and lose yourself in a favorite book. Watch the sky transform at sunset from the comfort of your private terrace.

TASTE THE SEA

Tempt your palate with a culinary journey inspired by fresh local ingredients, the bounty of the sea and the destinations we explore. Savor perfectly grilled steaks alfresco, enjoy lunch at the sushi bar, or dine in the comfort of your suite.

Our specialty restaurants fulfill every craving with unique dining experiences designed by chefs who have earned Michelin Stars, including Sven Elverfeld and Fabio Trabocchi, as well as James Beard Award recipient Michael Mina.



FEEL REJUVENATED

A truly restorative spa treatment nourishes the mind, body, and soul — and our locally inspired treatments have been designed to do just that. Feel the tension and stress of everyday life ebb from your consciousness, making way for feelings of tranquility and calm. Exceptional massages, facials and other treatments await you within our serene onboard oasis.



FEEL AT HOME

Experience the comforts of home in a spacious oceanview suite, where you greet each day from your private terrace and where each morning's view is more stunning than the last. Expertly appointed with luxurious amenities, your suite can transition effortlessly from private retreat to a haven for entertaining.



A couple in white attire stands on a yacht deck at sunset, looking out at a large, jagged mountain. The deck is lit with warm lights, and a telescope is visible on a tripod. The sky is filled with soft, golden clouds.

FEEL ENLIGHTENED

Each journey is curated to allow opportunities for making meaningful connections and deepening existing relationships — for engaging in ways that are new, unexpected, and surprising.

Explore new worlds, cultures, tastes — the serene quietude of an underwater ecosystem, or the transcendent flavors of an unexplored cuisine. Along the way, discover another side of yourself.

These are the moments that result in the richest and most rewarding travel experiences — the spark of magic that nourishes our spirit and flickers in our imaginations long after we've returned home.



FEEL IMMERSED

Thoughtfully crafted with a sense of purpose, our shore excursions offer authentic and memorable experiences that reveal the true essence of each destination. Whether you join a cadre of fellow travelers or select a private excursion with personal companions, exploration in small groups allows for a measure of intimacy, enhancing the valuable insights and fresh perspectives gained when immersing yourself in local culture or discovering a vista of untamed natural beauty.



DISCOVER CAPTIVATING DESTINATIONS

Set sail for celebrated yachting playgrounds and secluded coves that only an intimate yacht can access. Trade the winter chill for Caribbean sun, exploring from the forested peaks of Dominica and St. Lucia to the sugary sands of the Grenadines and Virgin Islands.

The winter season also offers opportunities to embark on a safari in South Africa, discover exotic Indian Ocean isles like the Seychelles and Maldives, or explore Asia from Singapore to Shanghai, arriving in Japan just in time for the spring cherry blossoms.

During the summer, our superyachts drop anchor along the French Riviera, Greek Isles and Dalmatian Coast in the Mediterranean and explore the British Isles, Baltic Sea and fjords of Iceland and Norway on Europe's northern shores.

The summer months are also the perfect time to sail for the breathtaking wilderness of Alaska, and 2026 marks our inaugural voyages to this glacial wonderland.

A WORLD OF WONDER

OUR ITINERARIES AT-A-GLANCE

ALASKA
ABOARD LUMINARA
MAY – SEP 2026
CLICK TO VIEW DESTINATION BROCHURE

TRANSATLANTIC
ABOARD EVRIMA & ILMA
APR 2025
APR 2026
CLICK TO VIEW DESTINATION BROCHURE

NORTHERN EUROPE
ABOARD EVRIMA & ILMA
JUN – SEP 2025
JUN – AUG 2026
CLICK TO VIEW DESTINATION BROCHURE

MEDITERRANEAN
ABOARD EVRIMA, ILMA & LUMINARA
APR – OCT 2026
CLICK TO VIEW DESTINATION BROCHURE

ASIA
ABOARD LUMINARA
DEC 2025 – MAR 2026
MAY 2026
CLICK TO VIEW DESTINATION BROCHURE

SOUTH PACIFIC
ABOARD EVRIMA
DEC 2026 – MAR 2027
CLICK TO VIEW DESTINATION BROCHURE

AFRICA & INDIAN OCEAN
ABOARD LUMINARA
NOV – DEC 2025
CLICK TO VIEW DESTINATION BROCHURE

CARIBBEAN & CENTRAL AMERICA
ABOARD EVRIMA & ILMA
JAN – APR / NOV – DEC 2025
JAN – APR 2026
CLICK TO VIEW DESTINATION BROCHURE

TRANSPACIFIC
ABOARD LUMINARA
MAY 13, 2026
CLICK TO VIEW DESTINATION BROCHURE

Click any destination on the map below to view our voyages.

CLICK TO VIEW OUR AT-A-GLANCE CALENDAR.



OUR YACHTS

Our intimate yachts, *Evrima*, *Ilma* and *Luminara*, have been purposefully designed to explore the world's celebrated cities and island hideaways. The sleek lines of the exteriors come together with fluid grace, evoking the relaxed freedom of the yachting lifestyle. The stylish, innovative design of the open-air spaces and cozy enclaves invites you to relax on board in an atmosphere of casual elegance. Each yacht features spacious, light-filled suites — all with private terraces — and an aft Marina with direct access to the sea for watersports. The yachts also offer the lavish amenities, world-class specialty restaurants and legendary personalized service that guests have come to expect from The Ritz-Carlton.

EVIRIMA

Join just 298 guests aboard *Evrima*, taking in the view from your suite's private terrace as you drop anchor off a scenic shoreline. From the aft Marina, you can explore by kayak or paddleboard before heading ashore. Five restaurants and six lounges offer an array of culinary delights, while legendary service and luxurious amenities complete the onboard experience.

CAPACITY: 298 GUESTS

TONNAGE: 25,400

YEAR BUILT: 2021



[CLICK HERE FOR
EVIRIMA'S DECKPLANS](#)

ILMA

With the highest ratio of space per guest at sea, *Ilma* features just 224 airy, light-filled suites, all with private terraces. Five restaurants, six bars and a wine vault offer culinary experiences to please every palate. The yacht's aft Marina includes expansive spaces where you can dine alfresco while admiring the seascapes or enjoy watersports directly from the yacht.

CAPACITY: 448 GUESTS

TONNAGE: 46,750

YEAR BUILT: 2024

[CLICK HERE FOR
ILMA'S DECKPLANS](#)



LUMINARA

A beacon of modern elegance inspired by light's allure embarks on inaugural Mediterranean voyages in 2025. *Luminara*, our next superyacht, features 226 suites with private terraces and unrivaled space ratios for guests at sea, while two new upper suite categories deliver 1,000 square feet of uplifting ambiance. Savor moments in five restaurants, six bars and a wine vault.

The expanded marina makes the sea your playground, and The Ritz-Carlton Spa® your haven for transformation.

CAPACITY: 452 GUESTS

TONNAGE: 46,750

YEAR BUILT: 2025

[CLICK HERE FOR
LUMINARA'S DECKPLANS](#)



EVIRIMA
THE POOL

AN OASIS OF BLUE
STRETCHES INTO THE SEA
AT THE AFT INFINITY POOL.
TAKE A REFRESHING DIP
WITH AN AMAZING VIEW.

OUR
SPACES

From the light pink sands of Guadeloupe and Bermuda to the French fjords of the Côte d’Azur to the open-air temples on the hilltop Acropolis of Athens, the wide-open spaces of the world inspire a sense of wonder. The Ritz-Carlton Yacht Collection gives you the freedom to roam these spaces and the time to capture the fine details that make each so captivating. What better way to travel between these inspiring spaces than on a yacht with one of the highest ratios of space per guest at sea. Relax on the private terrace of your spacious suite or breathe in the fresh sea air on the open decks as you anticipate what new horizon will rise before you.

EVIRIMA
MISTRAL

COME AS YOU ARE
FOR LUNCH, DINNER
OR COCKTAILS AND
ENJOY ONE OF THE BEST
VIEWS ON THE YACHT.



**EVIRIMA
THE
LIVING
ROOM**

THIS CHIC, COMFORTABLE
GATHERING PLACE
TRANSFORMS FROM A
LIBRARY AND COFFEE BAR
BY DAY TO A COCKTAIL
LOUNGE AT NIGHT.



**EVIRIMA
TALAAT
NAM**

HAVE A SEAT AT THE
SUSHI BAR OR GATHER
AROUND A TABLE TO
SAVOR SOUTHEAST
ASIAN CUISINE IN A
MODERN SETTING.



**EVIRIMA
THE
MARINA
TERRACE**

ENJOY DRINKS AND
LIGHT BITES WITH
VIEWS OF THE SEA
ON A SPACIOUS
TERRACE JUST STEPS
ABOVE THE MARINA.



**EVIRIMA
THE
BAR**

THIS INTIMATE
LOUNGE SERVES
PREMIUM LABELS
FROM AROUND
THE WORLD AND
ALSO OFFERS
CHAMPAGNE AND
CAVIAR PAIRINGS.

EVIRIMA
THE BARBER

HERE GENTLEMEN CAN ENJOY A TRIM, A SHAVE, A FACIAL AND OTHER BARBER SERVICES THAT WILL LEAVE THEM REFRESHED AND INVIGORATED.



EVIRIMA
THE GYM

FROM SUNRISE YOGA TO STRENGTH AND CARDIO TRAINING TO NUTRITION COACHING, INTEGRATED FITNESS PROGRAMS OFFER A HOLISTIC APPROACH TO WELLNESS.



EVIRIMA
THE RITZ-CARLTON SPA

INDULGE IN A REVITALIZING SPA TREATMENT IN A PRIVATE SPACE INDOORS OR ALFRESCO AND THEN RELAX IN THE STEAM ROOM OR SAUNA.

EVIRIMA
THE RELAXATION ROOM

TAKE SOME QUIET TIME TO CLEAR YOUR MIND AND ENJOY A PEACEFUL MOMENT OF REPOSE WITH A CALMING VIEW OF THE SEA.



ILMA
THE
MARINA
TERRACE



ILMA
MEMORI

ILMA
BEACH
HOUSE
POOL



ILMA
MISTRAL

OUR SUITES

Wake up every morning relaxed and carefree from one of our expertly appointed suites. Gaze out over the ocean from your private terrace.

Designed to combine the modern elegance of The Ritz-Carlton with the casual luxury of the world's most magnificent super yachts, our suites set a new standard for luxury travel. Furnished with luxurious, state-of-the-art amenities, feel at ease in your private oasis at sea — your Suite Ambassador is standing by to arrange your day.

SUITE AMENITIES AND FEATURES

- 149 – 228 spacious, all-terrace suites
- Access to a Suite Ambassador in all suite categories
- Private oceanview terrace
- Luxury custom king bed sleep system
- Custom luxury bed and bath linens
- Double vanity bathrooms
- Luxury bath amenities
- 24-hour in-suite dining
- Espresso machine with complimentary coffee and teas
- Mini-bar provisioned to your preferences
- Complimentary chilled bottle of champagne upon arrival
- Complimentary Wi-Fi

EVIRIMA CONNECTING TERRACE SUITES

SUITE: 600 SQ FT / 56 SQ M

TERRACE: UP TO 162 SQ FT / 15 SQ M

SELECT TERRACE SUITES HAVE THE ABILITY TO CONVERT INTO AN EXPANDED LIVING SPACE WHEN CONNECTED TO THE ADJACENT SUITE.





EVIRMA
THE
OWNER'S
SUITE

SUITE:
1001 SQ FT / 93 SQ M

TERRACE:
628 SQ FT / 58.3 SQ M

LEFT: LIVING AREA
TOP: BEDROOM
ABOVE: TERRACE



**EVIRIMA
THE
VIEW
SUITE**
SUITE:
510 – 544 SQ FT / 62 – 57 SQ M
TERRACE:
100 – 123 SQ FT / 9 – 11 SQ M
ABOVE: LIVING AREA
ABOVE LEFT: LIVING AREA
RIGHT: BATHROOM
FAR RIGHT: BEDROOM





**EVIRMA
THE
TERRACE
SUITE**

SUITE:
264 – 280 SQ FT / 24.5 – 26 SQ M
TERRACE:
53 – 75 SQ FT / 4.9 – 7 SQ M



EVIRIMA THE GRAND SUITE

SUITE:
587 SQ FT / 55 SQ M

TERRACE:
108 – 118 SQ FT / 10 – 11 SQ M

ABOVE: LIVING AREA
ABOVE RIGHT: BEDROOM
RIGHT: BATHROOM
FAR RIGHT: TERRACE



**EVIRIMA
THE
LOFT
SUITE**

SUITE: 587 SQ FT / 54.5 SQ M
TERRACE: 75 SQ FT / 7 SQ M

BELOW: BEDROOM
RIGHT: UPPER SUITE
LIVING AREA



**EVIRIMA
THE
SIGNATURE
SUITE**

SUITE:
420 SQ FT / 39 SQ M
TERRACE:
81 – 114 SQ FT / 7.5 – 10.6 SQ M

ABOVE: LIVING AREA
RIGHT: BEDROOM





ILMA
THE
OWNER'S
SUITE

SUITE:
915 – 955 SQ FT / 85 – 88.7 SQ M

TERRACE:
596 SQ FT / 55.4 SQ M



ILMA
THE
CONCIERGE
SUITE

SUITE:
699 – 803 SQ FT / 65 – 74.6 SQ M
TERRACE:
366 – 395 SQ FT / 34 – 36.7 SQ M

RIGHT: BEDROOM
BELOW: LIVING AREA



ILMA
THE
SIGNATURE
SUITE

SUITE:
417 – 427 SQ FT / 38.7 – 39.7 SQ M
TERRACE:
65 – 151 SQ FT / 7 – 14 SQ M

ABOVE: LIVING AREA
RIGHT: BEDROOM





LUMINARA
THE
OWNER'S
SUITE

SUITE:
741 – 1047 SQ FT / 68.8 – 97.3 SQ M
TERRACE:
596 – 1048 SQ FT / 55.4 – 97.4 SQ M

LUMINARA
THE
TERRACE
SUITE

SUITE:
294 SQ FT / 27.3 SQ M
TERRACE:
52 – 108 SQ FT / 4.8 – 10 SQ M



LUMINARA
THE
VIEW
SUITE

SUITE:
675 – 758 SQ FT / 62.7 – 70.4 SQ M
TERRACE:
213 – 643 SQ FT / 19.8 – 59.7 SQ M



LUMINARA
THE
LUMINARA
SUITE

SUITE:
517 – 658 SQ FT / 48 – 61.1 SQ M
TERRACE:
282 – 364 SQ FT / 26.2 – 33.8 SQ M



TRAVEL SEAMLESSLY

Allow our Air and Hotel Concierge to design a seamless travel experience from before your journey begins to after your voyage has come to an end. Find peace of mind with our customized reservation arrangements, where every logistical detail of your vacation experience has been considered. Our Air and Hotel Concierge is available to arrange air travel, hotel stays and transfers to and from the yacht for a memorable and unencumbered travel experience.



AIR

Our Air and Hotel Concierge can arrange your air travel, customized and coordinated to the yacht's schedule with our fully flexible air program. Select your preferred airline and class of service or allow us to facilitate private air arrangements.

HOTEL

Extend the luxury of your yacht experience with thoughtfully orchestrated hotel arrangements, with access to The Ritz-Carlton Hotels, Marriott luxury properties and other internationally celebrated hotels. Daily breakfast, portage and a group transfer between the hotel and yacht are among the included amenities.

TRANSFERS

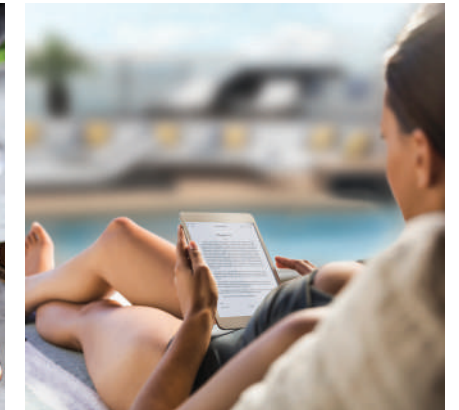
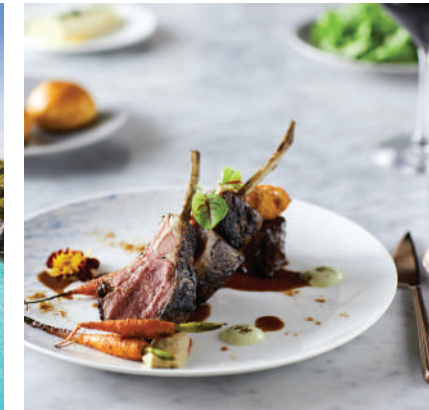
For a further stress-free experience, group and private transfers can be arranged between the airport and the pier or between the pier and the hotel on embarkation and disembarkation days.

LUGGAGE

Our luggage valet program provides guests with the option to have all luggage shipped directly from their home to the yacht. If you wish to take advantage of this service, please advise your Personal Travel Professional or Travel Agent in advance.

EXPLORE THE WORLD WITH MARRIOTT BONVOY

The Ritz-Carlton Yacht Collection is delighted to present an exceptional way to travel with your Marriott Bonvoy benefits. Set sail for celebrated yachting destinations and discover even more opportunities to earn and redeem while exploring the world.



EARN

Earn 5 points per \$1 spent on your cruise fare, as well as on the hotel package rate for participating Marriott Bonvoy hotels booked through The Ritz-Carlton Yacht Collection. Plus, receive one Elite Night Credit per night toward achieving higher Elite status.

REDEEM

Redeem an initial 180,000 points toward a \$1,000 savings on your cruise fare, and increments of 90,000 points toward a \$500 savings thereafter.

ONBOARD BENEFITS

On board the yacht, multiple dining venues, premium beverages, unlimited Wi-Fi and additional luxury amenities are part of your all-inclusive cruise fare. Your Marriott Bonvoy member status will also be recognized and rewarded throughout the voyage.

Learn more at www.ritzcarltonyachtcollection.com/loyalty

ILMA
THE
MARINA

OFFERS DIRECT ACCESS
TO THE SEA AS WELL AS
REFRESHMENTS AND
DRAMATIC VIEWS.



ILMA

RITZCARLTONYACHTCOLLECTION.COM

TERMS & CONDITIONS

Cruise Yacht OpCo Ltd d/b/a The Ritz-Carlton Yacht Collection is operated under license from and Ritz-Carlton Hotel Company, L.L.C. and is not an affiliate of The Ritz-Carlton Hotel Company, L.L.C. or Marriott International, Inc. Renderings are artistic concepts. Any specifications in this depiction may change at The Ritz-Carlton Yacht Collection's sole discretion without notice. The features, plans, itineraries, offerings and specifications described above are proposed only, and The Ritz-Carlton Yacht Collection reserves the right to modify, revise or withdraw any or all of the same in its sole discretion and without prior notice. Guest's cruise and related travel will be governed by the terms and conditions of the Cruise Contract in effect at the time of booking. The terms of the Cruise Contract will supersede any other representations or statements whether oral or written. Yacht's registry: Malta

RITZ® is a Registered Service Mark of The Ritz Hotel, Limited, Paris, and is used by The Ritz-Carlton Hotel Company under license.



**THE RITZ-CARLTON
YACHT COLLECTION**

For more information visit
RITZCARLTONYACHTCOLLECTION.COM
or contact your travel professional.



www.ssstravel.de
Trogerstr. 40 81675 München
Tel.089/472820 info@ssstravel.de